

Flush-type connector - SACC-DSI-MINFS-5CON-M26/1,0 - 1453805

Please be informed that the data shown in this PDF Document is generated from our Online Catalog. Please find the complete data in the user's documentation. Our General Terms of Use for Downloads are valid (<http://download.phoenixcontact.com>)



Sensor/actuator flush-type socket, 5-pos., 7/8", rear mounting with M26 fastening thread, with 1.0 m PE litz wire, 5 x 0.75 mm²



Key commercial data

Packing unit	1 1
Weight per Piece (excluding packing)	140.0 GRM
Custom tariff number	85444290
Country of origin	Germany

Technical data

Dimensions

Length of cable	1 m
-----------------	-----

Ambient conditions

Ambient temperature (operation)	-40 °C ... 85 °C (Socket)
Degree of protection	IP67

General

Rated current at 40°C	9 A
Rated voltage	250 V
Number of positions	5
Contact resistance	≤ 5 mΩ
Insulation resistance	≥ 100 MΩ
Status display	No
Surge voltage category	II
Pollution degree	3
Connection method	Individual wires
Mounting type	Rear mounting M26

Flush-type connector - SACC-DSI-MINFS-5CON-M26/1,0 - 1453805

Technical data

Material

Inflammability class according to UL 94	HB
Contact material	CuZn
Contact surface material	Au
Contact carrier material	PUR
Material, knurls	Zinc die-cast, nickel-plated

Cable

Cable type	PVC litz wire
Conductor cross section	0.75 mm ²
AWG signal line	18
Conductor structure signal line	24x 0.20 mm
Core diameter including insulation	2.7 mm
Thickness, insulation	0.85 mm (Core insulation)
Wire colors	brown, white, blue, black, green-yellow
Material conductor insulation	PVC
Ambient temperature (operation)	-40 °C ... 85 °C (cable, fixed installation)

Classifications

eCl@ss

eCl@ss 4.0	27140815
eCl@ss 4.1	27140815
eCl@ss 5.0	27143423
eCl@ss 5.1	27143423
eCl@ss 6.0	27143423
eCl@ss 7.0	27449001
eCl@ss 8.0	27449001

ETIM

ETIM 4.0	EC002061
ETIM 5.0	EC002061

UNSPSC

UNSPSC 6.01	31251501
UNSPSC 7.0901	31251501
UNSPSC 11	31251501
UNSPSC 12.01	31251501
UNSPSC 13.2	31251501

Flush-type connector - SACC-DSI-MINFS-5CON-M26/1,0 - 1453805

Approvals

Approvals


Approvals


UL Recognized / cUL Recognized / GOST / cULus Recognized


Ex Approvals


Approvals submitted

Approval details

UL Recognized 	
mm ² /AWG/kcmil	20
Nominal current I _N	8 A
Nominal voltage U _N	600 V

cUL Recognized 	
mm ² /AWG/kcmil	20
Nominal current I _N	8 A
Nominal voltage U _N	600 V

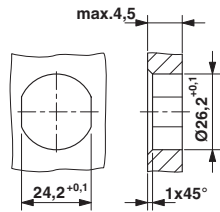
GOST 	
--	--

cULus Recognized 	
--	--

Drawings

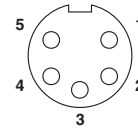
Flush-type connector - SACC-DSI-MINIFS-5CON-M26/1,0 - 1453805

Dimensioned drawing



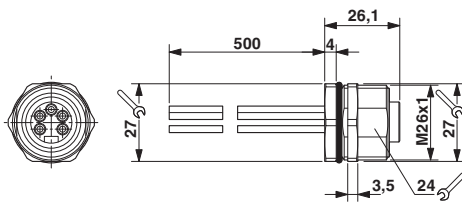
Housing cutout

Schematic diagram



Connector pin assignment

Dimensioned drawing



7/8" flush-type socket

Circuit diagram

