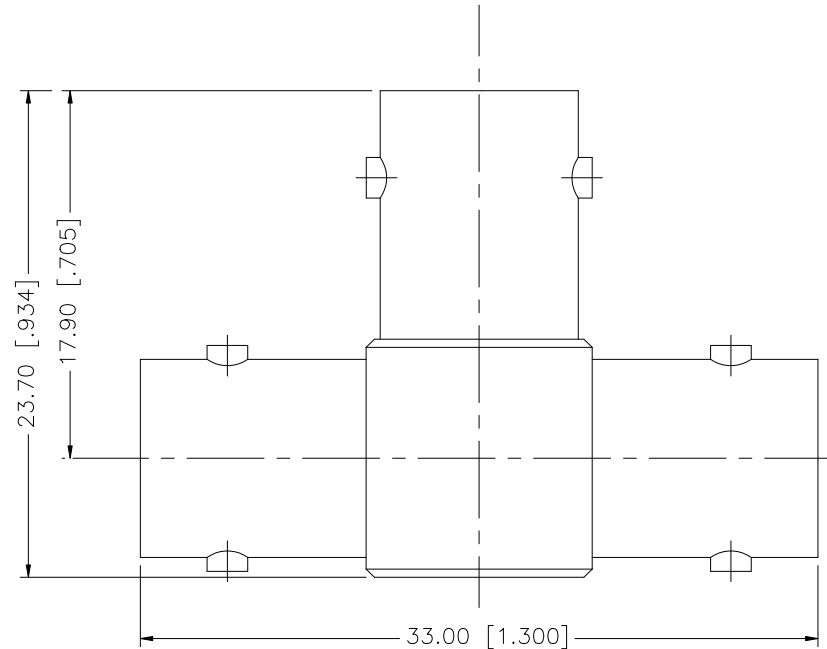


REV.	DATE	DESCRIPTION
NC	12/11/07	INITIAL RELEASE



8					<small>UNLESS OTHERWISE SPECIFIED DIMENSIONS ARE IN MILLIMETERS. DIMENSIONS IN [] ARE IN INCHES AND FOR CUSTOMER REFERENCE ONLY.</small> <small>UNLESS OTHERWISE SPECIFIED TOLERANCES FOR MILLIMETERS ARE: 0.5 - 8mm ± 0.20mm 8 - 30mm ± 0.40mm 30 - 120mm ± 0.50mm</small> <small>UNLESS OTHERWISE SPECIFIED TOLERANCES FOR INCHES ARE: .020 - .315 = ± 0.007" .315 - 1.180 = ± 0.015" 1.180 - 4.724 = ± 0.020"</small>	APPROVALS	DATE	<h1 style="color: blue;">Amphenol Connex</h1>				
7						DRAWN	G.R.S.				12/10/07	
6						CHECKED			PART DESCRIPTION BNC JACK, JACK, JACK TEE ADAPTER 75 ohm			
5						ISSUED						
4						SHEET	1 OF 1					
3	CONTACT PIN	PHOS. BRONZE	GOLD	2				PART NO.				
2	INSULATOR	DELTRIN	NATURAL	1				112456				
1	BODY	BRASS	NICKEL	1								
	DESCRIPTION	MATERIAL	FINISH	QTY	DO NOT SCALE DRAWING			CAD FILE	DWG. NO.	REV.	SIZE	SCALE
								C:/112/112456.DWG	112456.DWG	NC	A	NA