

4

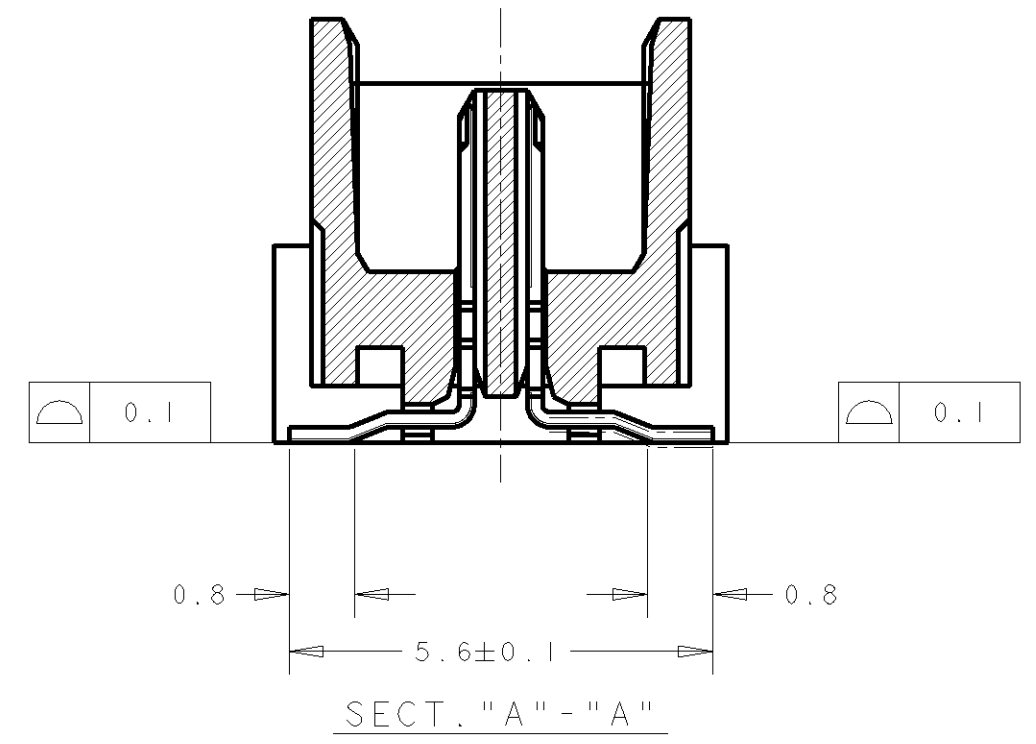
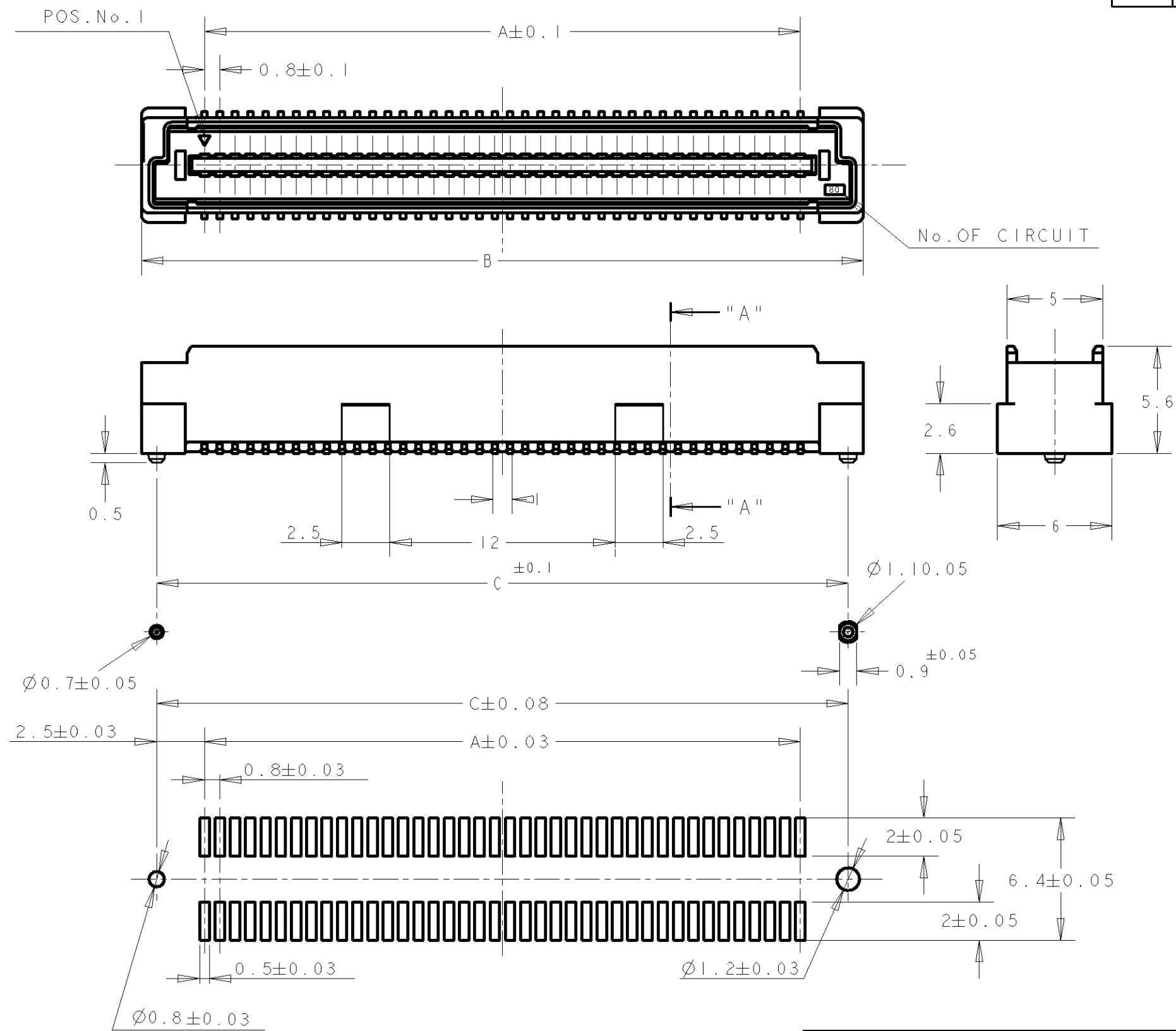
3

2

1

THIS DRAWING IS UNPUBLISHED. RELEASED FOR PUBLICATION  
 © COPYRIGHT BY ALL RIGHTS RESERVED.

LOC	DIST	REVISIONS			
P	LTR	DESCRIPTION	DATE	DWN	APVD
DY	-	K1 REVISED PER ECO-11-005139	19MAR11	RK	HMR



- NOTES:
- 1. MATERIAL; HOUSING: L.C.P. (HIGH TEMP THERMO PLASTIC) UL 94V-0, NATURAL. CONTACT: BRASS.
  - 2. FINISH; CONTACT AREA: 0.0002 MIN GOLD ON 0.0013 MIN ALL OVER NICKEL. SOLDERING AREA: 0.001 MIN TIN-LEAD.
  - 3. POSITION SERIES; SEE TABLE.
  - 4. CONN STACK HEIGHT COMBINE OF PLUG "Y" H VS REC "X" H. STACK HEIGHT = Y + X - 5

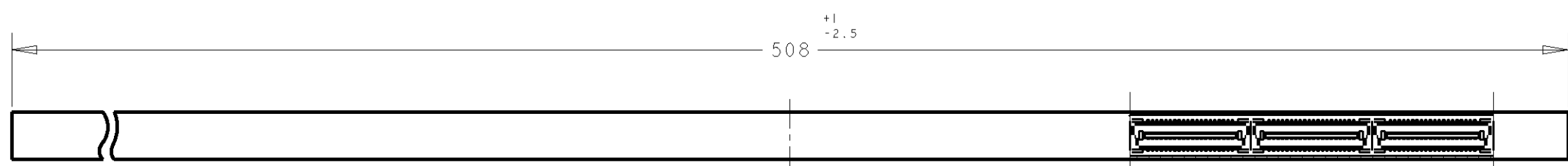
P/N SEE SHEET 2 OF 2.

RECOMMENDED P.C. BOARD LAYOUT

DWN T. KUSUHARA 30MAR93		TE Connectivity	
CHK I. ENOMOTO 30MAR93			
APVD ERIC TNG		NAME	
PRODUCT SPEC		PLUG ASSEMBLY 6H TYPE (0.5 BOSS LENGTH) FOR FH 0.8mm PITCH B-T-B CONNECTOR	
APPLICATION SPEC		SIZE	CAGE CODE
MATERIAL		A3	00779
FINISH		DRAWING NO	
		C-179029	
		SCALE	SHEET
CUSTOMER DRAWING		4:1	1 OF 2
			REV K1

THIS DRAWING IS UNPUBLISHED. RELEASED FOR PUBLICATION .19 .  
 © COPYRIGHT - BY - ALL RIGHTS RESERVED.

LOC	DIST	REVISIONS			
P	LTR	DESCRIPTION	DATE	DWN	APVD
DY	-	- SEE SHEET 1 OF 2	-	-	-

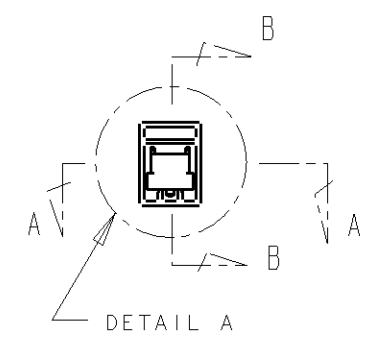


SECT A-A

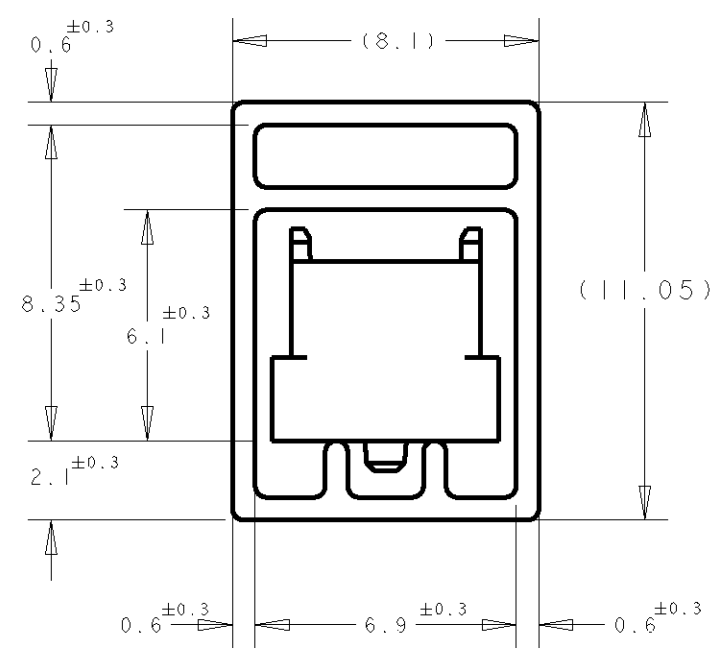


P/N 9-912056-6 PLUG ASS'Y (H=5mm, W/STEEL COVER), 0.8mm BTB STACKING CONN

SECT B-B



REFERENCE PICTURE OF TUBE PACK



DETAIL "B"  
(SCALE 5-1)

5	84.2	85.8	79.2	200	1-	-0
6	76.2	77.8	71.2	180		-9
6	68.2	69.8	63.2	160		-8
7	60.2	61.8	55.2	140		-6
9	52.2	53.8	47.2	120		-5
10	44.2	45.8	39.2	100		-4
12	36.2	37.8	31.2	80		-3
16	28.2	29.8	23.2	60		-2
22	20.2	21.8	15.2	40		179029-1
QTY/ TUBE	C	B	A	POS.	CONN P/N	

DIMS: mm		TOLERANCES UNLESS OTHERWISE SPECIFIED:		DWN T.KUSUHARA 30MAR93		<b>TE</b> TE Connectivity	
		0 PLC ±- 1 PLC ±0.20 2 PLC ±0.25 3 PLC ±0.30 4 PLC ±- ANGLES ±3°		CHK I.ENOMOTO 30MAR93			
MATERIAL		FINISH		APVD ERIC TNG		SIZE A3	
				PRODUCT SPEC -		CAGE CODE 00779	
				APPLICATION SPEC -		DRAWING NO C-179029	
				WEIGHT -		SCALE -	
CUSTOMER DRAWING						SHEET 2 OF 2	
						REV K1	