

DRAWING MADE IN THIRD ANGLE PROJECTION

THIS DRAWING IS UNPUBLISHED.

RELEASED FOR PUBLICATION

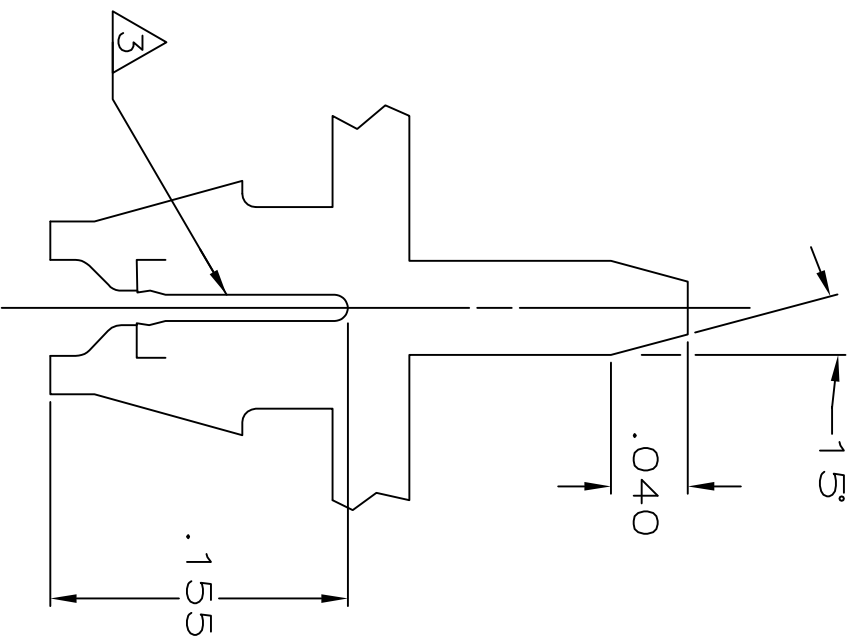
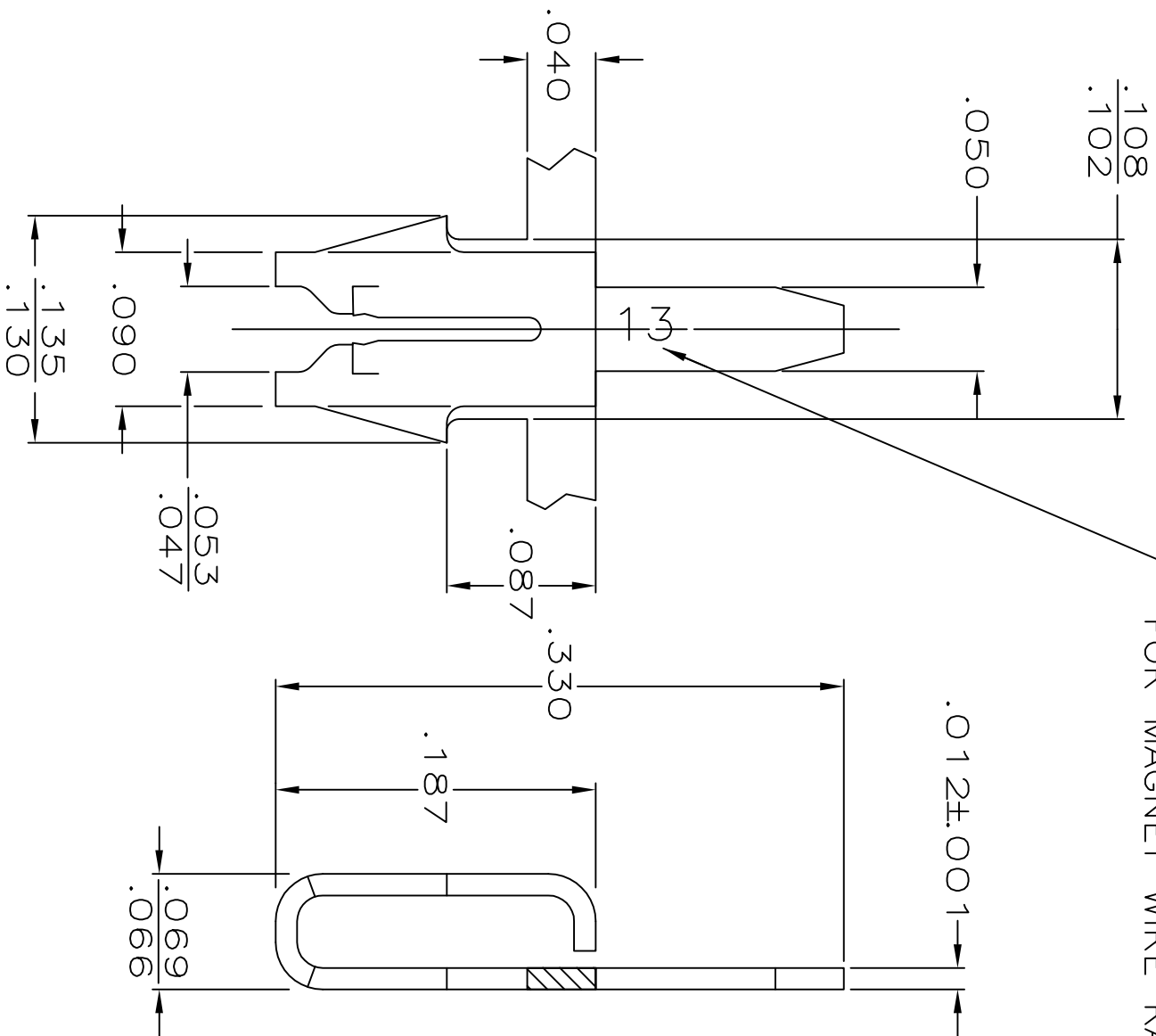
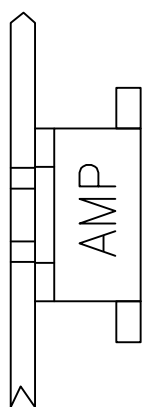
.19

© COPYRIGHT 19

BY AMP INCORPORATED. ALL INTERNATIONAL RIGHTS RESERVED.

Loc	DIST	P	F	ZONE	LTR	REVISIONS	DESCRIPTION	DATE	APPD
AF	50				L	REV NOTE 5 REACT -2 PER 0G1A-0079-99		22MAR99	MF/PD
					L1	REVISED PER ECR-12-022060		17FEB13	CX-LL

IDENTIFICATION NUMBER FOR MAGNET WIRE RANGE



- 1 MAG-MATE CAVITY SPECIFICATION.
- 2 CONTINUOUS STRIP ON REELS WITH TERMINALS LOCATED ON .200 CENTERS.
- 3 SLOT ACCEPTS #24-#22 AWG COPPER MAGNET WIRE.
- 4 .000080 MIN TIN PLATE.
- 5 .000080 MIN TIN PLATE OVER .000050 MIN NICKEL UNDERPLATE.
- 6 REELED FOR APPLICATION THROUGH MAG-MATE INSERTION MACHINE
- 7 REELED FOR INSERTION INTO PRINTED CIRCUIT BOARD

7	6	4	62439-3
6	5	4	62439-2
			62439-1

DO NOT SCALE PRINT. UNLESS SPECIFIED DIMENSIONS IN INCHES TOLERANCES ON:		DR	11/21/88	M.S. FEHER	NAME	<b>AMP</b> AMP INCORPORATED Harrisburg, Pa. 17105	
1	PLC DEC ± .010	CHK	11/27/88	JR RUTH	SIZE	FSCM NO	DRAWING NO
2	PLC DEC ± .010	APPD	11/28/88	NELSON E. NEFF	<b>B</b>	00779	62439
3	PLC DEC ± .010	PRODUCT SPEC	C.G. ATHERTON		SCALE	10:1	SHEET 1 OF 1

MATERIAL #4 HARD BRASS

FINISH SEE TABLE