

# FM4 Family(Cortex-M4F MCU) Development SK S6SE2A58G0ASA(M)0002 (SK-FM4-U120-9B560(-MEM))

## FM4 Starter Kit

### DESCRIPTION

The Spansion FM4 starter kit can be used to evaluate this general-purpose microcontroller. It is equipped with the minimum requirement for the peripheral device on the board. It is also possible to perform the evaluation system by connecting a peripheral device such as sensors and motors through the monitoring pins.

### SPECIFICATIONS

- MCU : MB9BF568R (FM4 Family, 160MHz)
- External power supply (3.3V/5V), USB bus Power
- On board ICE (CMSIS-DAP)
- USB Function (Mini-USB Type-B)
- 3 color LED (R,G,B)
- SD Card Interface
- Buttons (Reset/Ext. Interrupt/NMI)
- Potentiometer
- External memory : Flash/SDRAM (with Mem)
- User setting jumpers
- JTAG-ICE connector

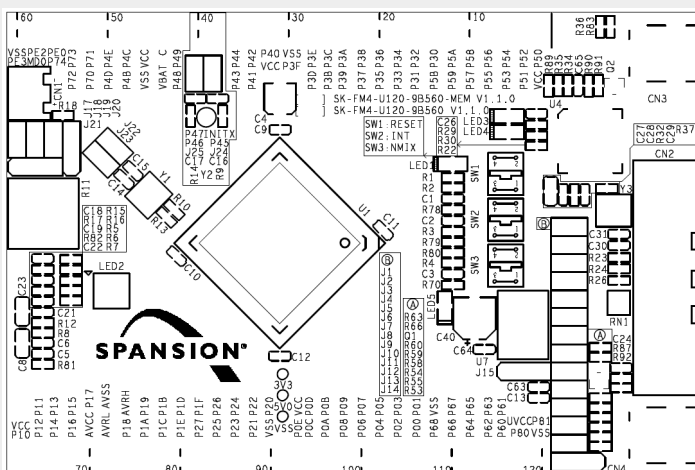
### Features

- Spansion FM4 Family MB9BF568R MCU  
ARM Cortex-M4F (DSP/FPU) core
- Monitoring Pin : 120 pins
- SDIF (SD card Interface)
- On board ICE (CMSIS-DAP)
- External memory : Flash/SDRAM (with Mem)

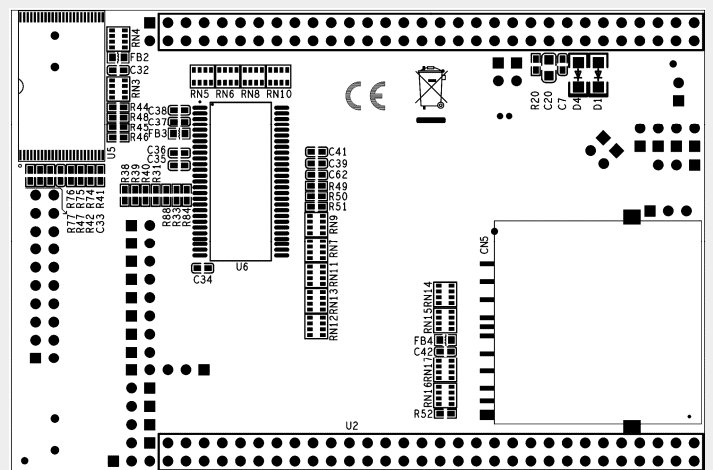


### BOARD LAYOUT

Board Top Side



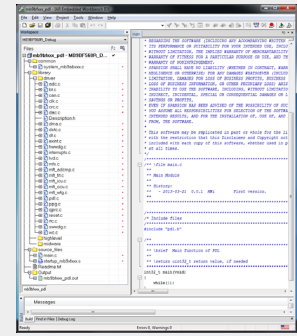
Board Bottom Side



Peripheral Driver Library

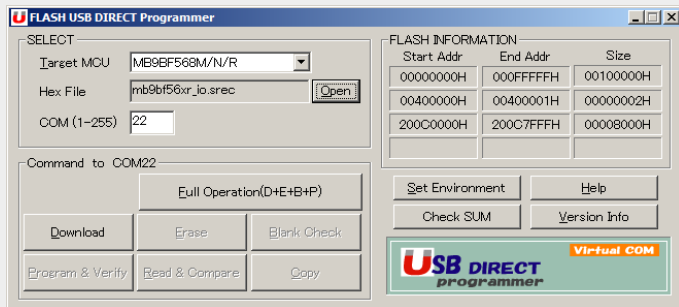
- Hardware
  - FM4 Starter Kit Board
- Firmware
  - mb9bf56xr\_template
  - mb9bf56xr\_pdl
  - sw-examples
  - USB Virtual -COM port
  - Flash USB Direct Programmer

- Document & Tool
  - Schematic file
  - ReadMe\_SK-FM4-U120-9B560\_v12
  - Serial Port Viewer



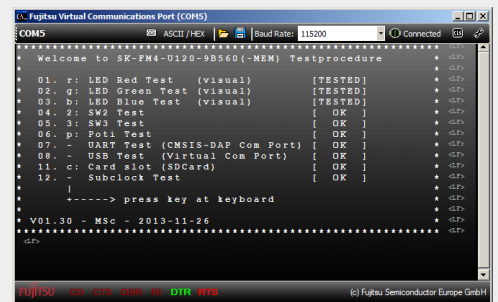
Development workspace

USB DIRECT Programmer



Program the Flash through USB I/F

Serial Port Viewer



Display test result through UART

DEVELOPMENT ENVIRONMENT

All the sample code/peripheral driver library code is developed under IAR Embedded Workbench and KEIL  $\mu$ Vision.



IAR site : <http://www.iar.com/jp/>



KEIL site : <http://www.arm.com/>

Web

For detail information of this set of starter kit please access the following site:

URL : <http://www.spansion.com/StarterKit> → Spansion FM4 Evaluation Board (SK-FM4-U120-9B560)

For detail technical issue please send mail to: [mcu-ticket-jp@spansion.com](mailto:mcu-ticket-jp@spansion.com) (Japan site)

Spansion: 915 DeGuigne Drive, PO Box 3453, Sunnyvale, CA 94088-3453 USA  
[www.spansion.com](http://www.spansion.com)

©2014 Spansion®, the Spansion logo, MirrorBit®, MirrorBit® Eclipse™, Easy DesignSim™, Traveo™ and combinations thereof, are trademarks and registered trademarks of Spansion LLC in the United States and other countries. Other names used are for informational purposes only and may be trademarks of their respective owners.

[www.facebook.com/spansion](https://www.facebook.com/spansion)   [twitter: @spansion](https://twitter.com/spansion)   [www.youtube.com/spa](https://www.youtube.com/spa)   [www.linkedin.com/company/spansion](https://www.linkedin.com/company/spansion)

