



Copyright FCI



FCIconnect.com

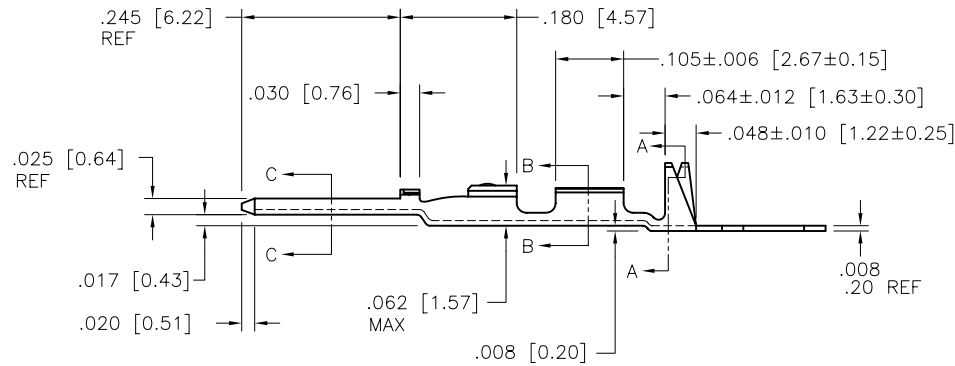
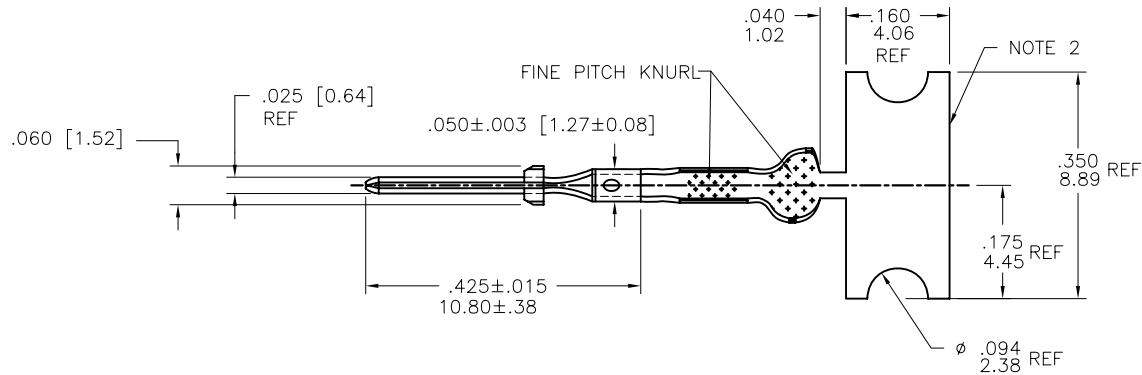


1 | 2

3

4

PRODUCT NUMBER  
SEE SHEET 2



mat'l. code 3/4 HD BRASS CDA NO. 260				surface <input checked="" type="checkbox"/> tolerance		projection	product family PV TERMINAL	
ltr	ecn no	dr	date	tolerances unless otherwise specified			title	
D	V41703	SAR	1994-11-30	angles	$\frac{XX}{100} \pm 0.1 / X \pm 3$	INCH/MM	CTW MALE PIN	
E	V80946	LSS	1998-06-03	$\frac{F}{100}$	$\frac{XXX}{1000} \pm 0.005 / XXX \pm 13$			
F	V04-0056	VS	2004-02-17	$0^\circ \pm 2'$	$\frac{XXXX}{10000} \pm 0.0020 / XXX \pm 0.051$	scale 4/1		
G	V05-0467	HTB	2005-05-23	dr	S ROYER	1994-11-30	dwg no sheet 1 of 3 size	
H	V06-0623	HTB	2006-06-28	ENGR	T.HANNA	1994-11-30	75653 A4	
J	V07-0218	HTB	2007-03-16	chr	T.HANNA	1994-11-30	type CUSTOMER Drawing	
K	V08-0440	HTB	2008-10-09	appd	T.HANNA	1994-11-30		
sheet index	revision	K	K	K				
	sheet	1	2	3				

form: A4mmXLC

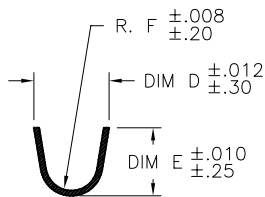
1

2

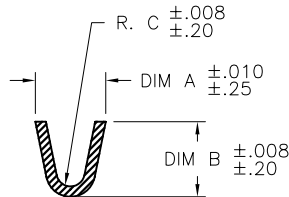
3

4

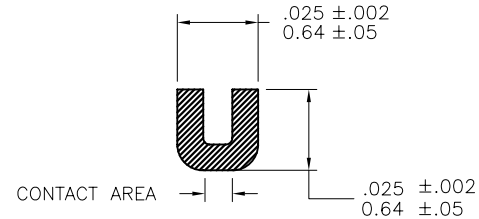
PRODUCT NO. AS REELED FOR APPLICATION MACHINES NOTE 5		WIRE AWG	WIRE BARREL			INSULATION BARREL			
RIGHT TO LEFT FEED	LEFT TO RIGHT FEED		A	B	C	D	E	F	
75653-001	75653-004	28-32	.054/1.37	.058/1.47	.011/0.28	.115/2.92	.105/2.67	.040/1.02	OBSOLETE
75653-001LF	75653-004LF	28-32	.054/1.37	.058/1.47	.011/0.28	.115/2.92	.105/2.67	.040/1.02	NOTE 7
75653-002	75653-005	22-26	.070/1.78	.065/1.65	.017/0.43	.139/3.53	.120/3.05	.050/1.27	OBSOLETE
75653-002LF	75653-005LF	22-26	.070/1.78	.065/1.65	.017/0.43	.139/3.53	.120/3.05	.050/1.27	NOTE 7
75653-003	75653-006	18-20	.104/2.64	.104/2.64	.021/0.53	.139/3.53	.120/3.05	.050/1.27	OBSOLETE
75653-003LF	75653-006LF	18-20	.104/2.64	.104/2.64	.021/0.53	.139/3.53	.120/3.05	.050/1.27	NOTE 7



SECTION A-A  
SCALE 2:1



SECTION B-B  
SCALE 2:1



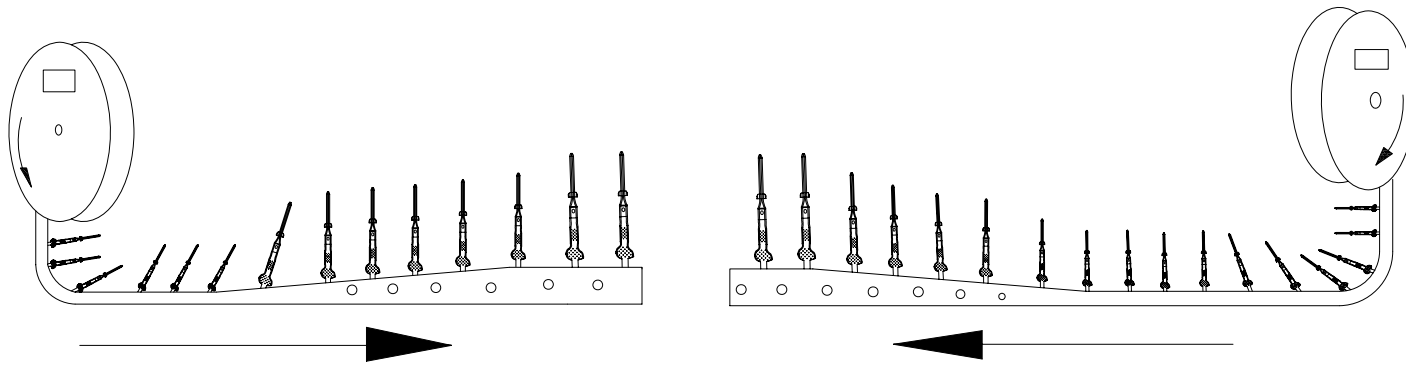
SECTION C-C  
SCALE 5:1

NOTES:

1. PLATING: 100μ"/2.54μ SnPb MINIMUM PRE-PLATED (OBSOLETE)  
P/N WITH LF SUFFIX: 100μ"/2.54μ Sn MINIMUM PRE-PLATED
2. FOR MANUFACTURING PURPOSES ONLY.
3. PART MAY BE USED WITH MINI-LATCH HSG.
4. APPLICABLE SPECIFICATIONS:  
A. BUS-12-098: PRODUCT SPECIFICATION  
B. TA-211: CRIMP SPECIFICATION
5. PART NUMBERS WITH AN LF SUFFIX MEET EUROPEAN UNION DIRECTIVES AND OTHER COUNTRY REGULATIONS AS DESCRIBED IN GS-22-008.
6. THIS PRODUCT IS NOT INTENDED TO BE EXPOSED TO MANUFACTURING SOLDER PROCESSES.
7. THIS PRODUCT HAS 100% TIN PLATING IN THE INTERFACE AND HAS NOT BEEN TESTED FOR WHISKER GROWTH IN ALL INTERCONNECT ENVIRONMENTS.
8. PACKAGE QUANTITY: 8000 PER REEL

mat'l. code		surface		tolerance		projection		product family			
3/4 HD BRASS CDA NO. 260		✓						PV TERMINAL			
ltr	ecn no	dr	date	tolerances unless otherwise specified				title			
K				angles	XX ±.01/XX±3		INCH/MM		CTW MALE PIN		
				0° ±2'	XXX ±.005/XX±13		scale 4/1				
					XXXX ±.0020/XXX±.051						
		dr	S ROYER	1994-11-30	dwg no					sheet 2 of 3	size
		enr	T.HANNA	1994-11-30	75653					A4	
		chr	T.HANNA	1994-11-30	type					CUSTOMER Drawing	
sheet index	revision sheet										

PRODUCT NUMBER  
SEE SHEET 2



Unreeling Direction  
Left to Right Into  
Applicator

Unreeling Direction  
Right to Left Into  
Applicator

mat'l. code 3/4 HD BRASS CDA NO. 260		surface <input checked="" type="checkbox"/>	tolerance	projection	product family PV TERMINAL
ltr	ecn no	dr	date	tolerances unless otherwise specified	title CTW MALE PIN
k				angles XX ±01/X±3 XXX ±005/XX±13	INCH/MM
				0° ±2° .XXX ±0020/XXX±051	scale 1:1
		dr	H. SUNDY	2004-02-17	dwg no 75653
		engr	H. SUNDY	2004-02-17	sheet 3 of 3
		chr	H. SUNDY	2004-02-17	size A4
		appd	H. SUNDY	2004-02-17	type CUSTOMER Drawing
sheet index	revision sheet				