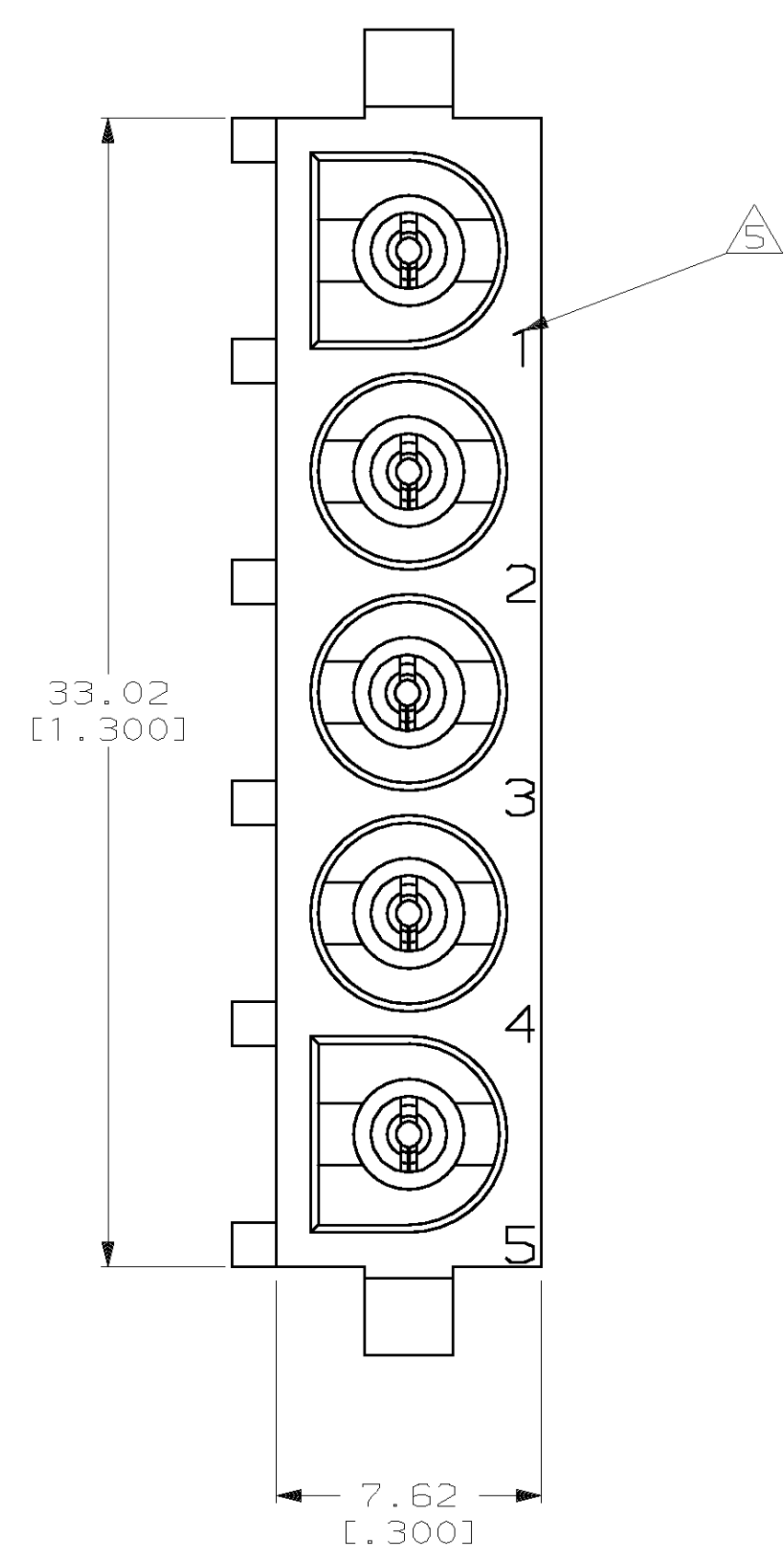
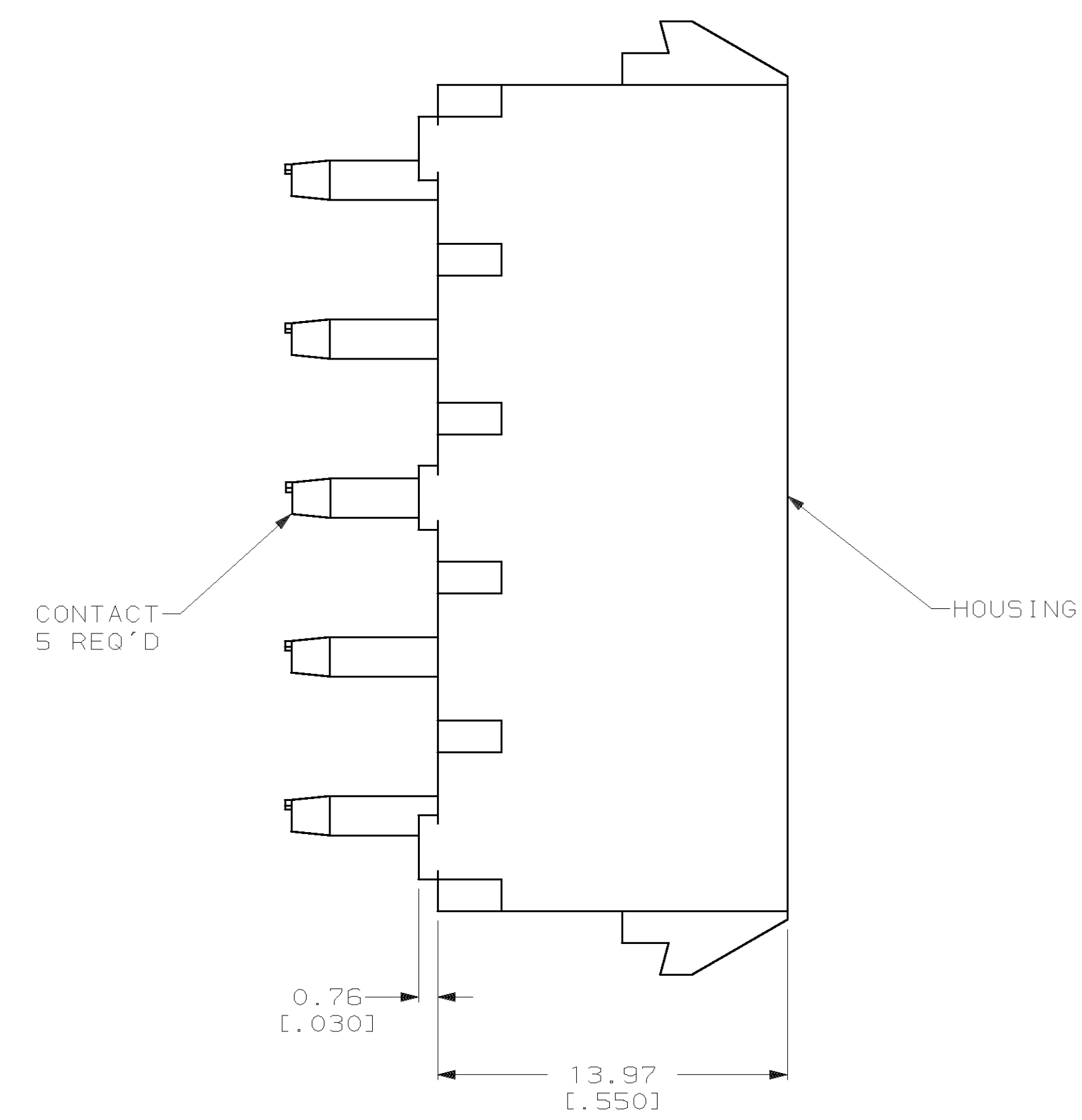
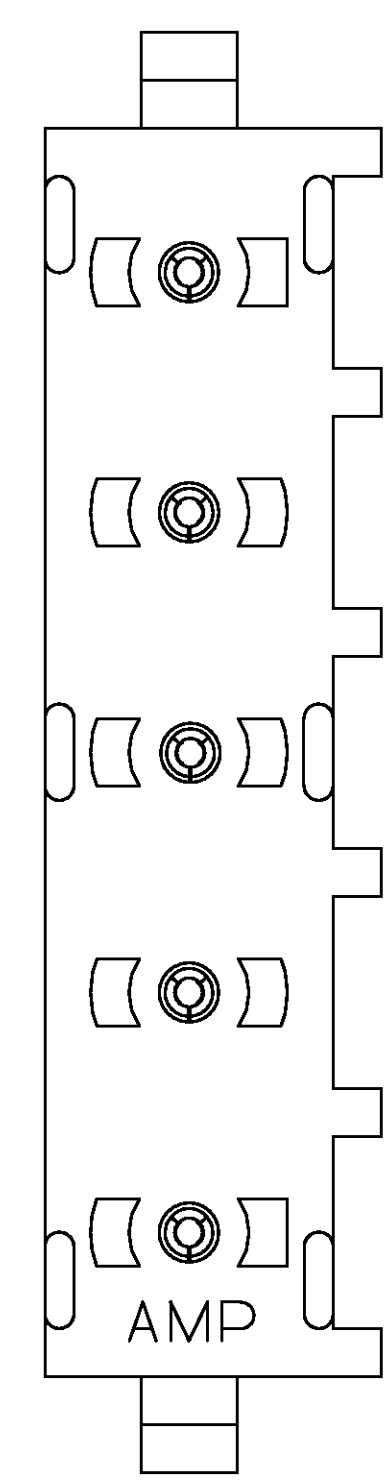
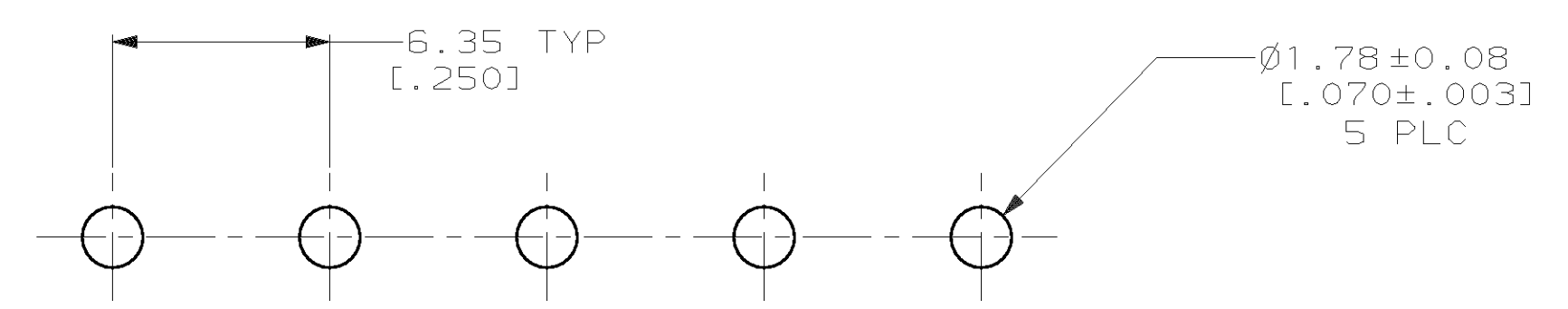


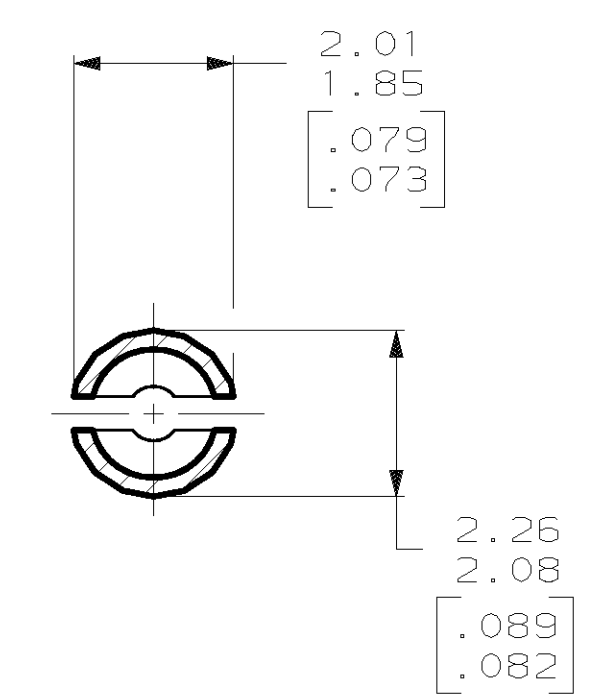
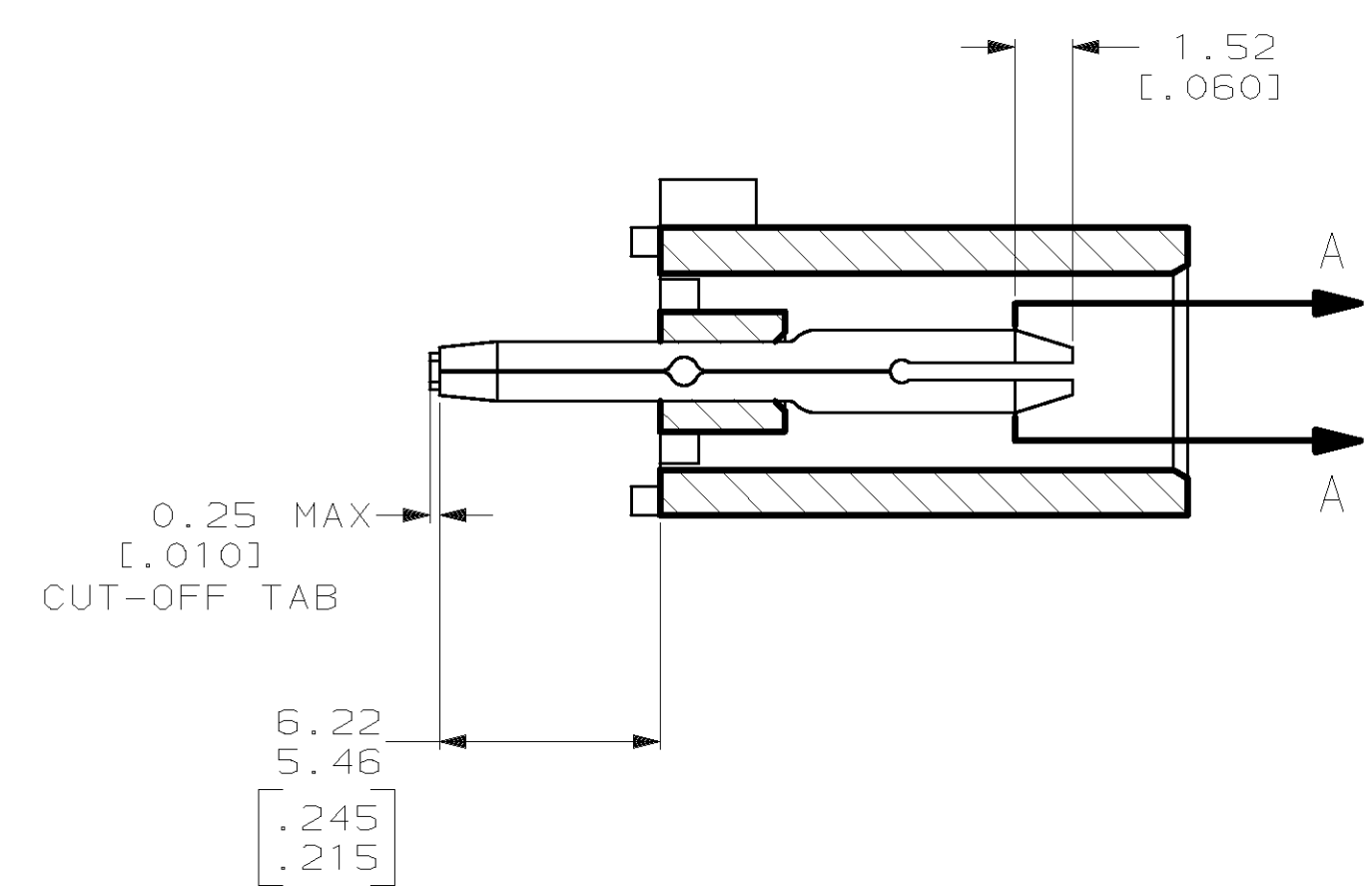
LOC		DIST		P		F		ZONE		LTR		REVISIONS		DATE	APPD
CM	53													28-JAN-99	BL
A												REV PER EC 0G1B-0261-98		RS	



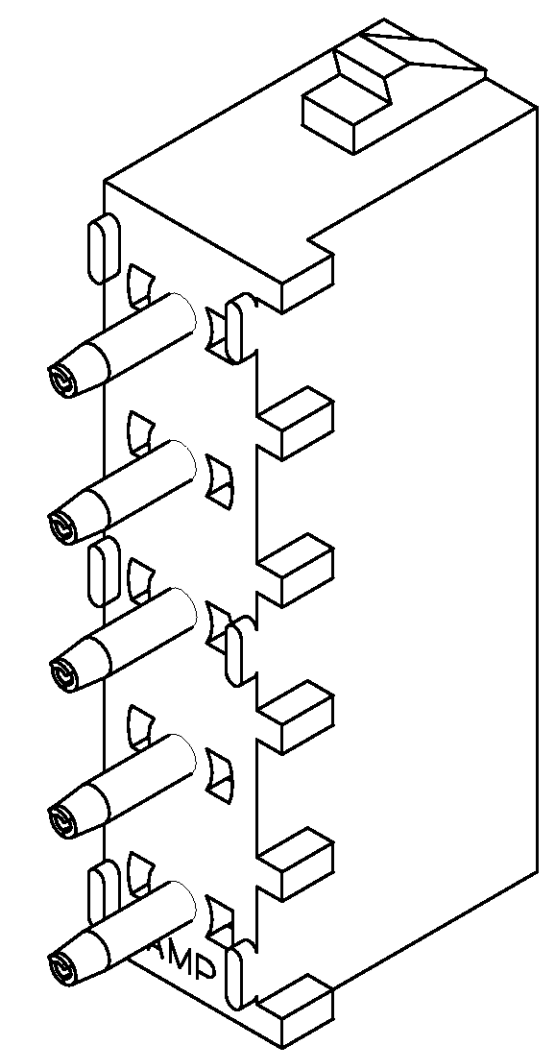
- PARTS COMPLY WITH AMP SOLDERABILITY SPECIFICATION 109-11-3.
 -
 -
 - DIMENSIONS IN BRACKETS ARE IN INCHES.
- △ CIRCUIT IDENTIFICATION CHARACTERS ARE ADJACENT TO THE INDICATED CAVITIES, BUT LOCATION AND ORIENTATION MAY DIFFER FROM PRINT.



RECOMMENDED MOUNTING HOLE PATTERN FOR 3.18 [.125] THICK P.C. BOARD



SECTION A-A SCALE 10:1



3-DIMENSIONAL MODEL NTS

METRIC

THIS DRAWING IS A CONTROLLED DOCUMENT FOR AMP INCORPORATED. IT IS SUBJECT TO CHANGE AND THE CONTROLLING ENGINEERING ORGANIZATION SHOULD BE CONTACTED FOR THE LATEST REVISION.

PHOSPHOR BRONZE, PRE-TIN		NYLON, UL94V-0, WHITE		794283-1	
PIN CONTACT MATERIAL AND FINISH		HOUSING MATERIAL		PART NO	
DO NOT SCALE PRINT. UNLESS SPECIFIED DIMENSIONS IN mm [INCHES]		2-20-97 R. VESTAL		AMP Incorporated Harrisburg, PA 17105-3508	
TOLERANCES ON:		CHK 2-20-97 R. SWING			
2 PLC DEC ±0.13 [.005]		APPD 2-20-97 M. TRULL		NAME	
3 PLC DEC ± -		APPD 2-20-97 M. TRULL		PIN HEADER ASSEMBLY, 5 CIRCUIT, UNIVERSAL MATE-N-LOK™	
ANGLES ± -		PRODUCT SPEC -		SIZE	
MATERIAL SEE TABLE		APPLICATION SPEC -		D	
FINISH SEE TABLE		WEIGHT -		CAGE CODE 00779	
				DRAWING NO C-794283	
				SCALE 5:1	
				SHEET 1 OF 1	