

| ATLANTIC VERSION TERMINATOR INTERFACE ADAPTER | PART NUMBER | REVISION | DESCRIPTION | FEED TYPE | APPLICATOR STYLE CONVERSION CHART | | | | | | |
|---|-------------|----------|--------------------------|---------------------------------|-----------------------------------|-----------------------|-----------|-------------|-----------|---|------------------------|
| | | | | | CONVERT TO | PART NUMBERS REQUIRED | | | | | |
| | 2150297-2 | B | FINE CRIMP HEIGHT ADJUST | PNEUMATIC | - | - | - | - | - | - | |
| | 2150297-5 | B | FINE CRIMP HEIGHT ADJUST | SERVO LATCH PLATE ⁴ | SERVO LATCH PLATE | 2119951-1 | 1803052-1 | 8-2150297-5 | - | - | 2168400-7 (QUANTITY 2) |
| | | | | | SMART APPLICATOR | 2161326-1 | - | 8-2150297-4 | - | - | - |
| | 2150297-6 | B | NON-CRIMP HEIGHT ADJUST | SERVO LATCH PLATE ¹¹ | PNEUMATIC FEED | 2119950-1 | 2031314-1 | - | 2119641-1 | - | 2063440-2 |
| | | | | | - | - | - | - | - | - | - |
| | 2150297-7 | B | FINE CRIMP HEIGHT ADJUST | NONE | - | - | - | - | - | - | |
| | 7-2150297-7 | A | CRIMP TOOLING KIT | - | - | - | - | - | - | - | |

| APPLICATOR DATA | | |
|-----------------------------------|----------------|------|
| CRIMP | SIZE | TYPE |
| WIRE | 2.29 mm [.090] | F |
| INSUL | 3.56 mm [.140] | F |
| APPLICATOR INSTRUCTIONS 408-10390 | | |

| TERMINAL DATA: TE TERMINAL | | TE CRIMP SPECIFICATION | |
|---|-------------|------------------------------|-------------|
| TERMINAL NAME: RECP, POSITIVE LOCK, .250 SERIES | | | |
| WIRE STRIP LENGTH | | INSULATION DIAMETER RANGE | |
| 4.40-5.17 mm [.173-.204 IN] | | Ø1.52-2.54 mm [.060-.100 IN] | |
| TERMINAL APPLICATION SPECIFICATION | 114-2074 | - | - |
| TERMINALS APPLIED ¹⁰ | | | |
| TE TERMINAL | TE TERMINAL | TE TERMINAL | TE TERMINAL |
| 63119-1 | 63119-2 | 2238156-1 | 2238156-2 |
| 2238141-1 | | | |

| WIRE SIZE | CRIMP HEIGHT mm [INCH] | CRIMP HEIGHT REFERENCE SETTING |
|-----------|-------------------------------|--------------------------------|
| 18 AWG | 1.55 +/- 0.05 [.061 +/- .002] | 10.5 |
| 20 AWG | 1.45 +/- 0.05 [.057 +/- .002] | 11.4 |
| 22 AWG | 1.37 +/- 0.05 [.054 +/- .002] | 11.7 |

- ¹ RECOMMENDED SPARE PARTS
- ² GREASE BEARING SURFACES LIGHTLY
- 3. LUBRICATE DAILY PER THE APPLICATOR INSTRUCTION SHEET SUPPLIED WITH THE APPLICATOR.
- ⁴ APPLICATOR SPECIFIC DATA TO BE ENTERED INTO BLANK MEMORY CHIP AT ASSEMBLY. SEE BELOW FOR PART NUMBER:
 PNEUMATIC FEED WITH "SMART APPLICATOR" CONVERSION: 8-2150297-4
 SERVO FEED WITH "FINE CRIMP HEIGHT ADJUST": 8-2150297-5
 SERVO FEED WITH "NON-CRIMP HEIGHT ADJUST": 8-2150297-6
- 5. ADJUSTMENT OF THE STRIPPER MAY BE REQUIRED WHEN MOVING THE APPLICATOR BETWEEN BENCH AND LEADMAKER APPLICATIONS.
- ⁶ APPLY PART NUMBER 1-23419-5 LOCTITE TO THREADS OF ITEMS 50 & 62. APPLY PART NUMBER 2-23419-6 TO THREADS OF ITEM 242. FOR -6 ONLY APPLY PART NUMBER 1-23419-5 LOCTITE TO THREADS OF ITEM 37.
- ⁷ GREASE THREADS, GROOVE AND O-RING ON ITEMS 35 & 252.
- ⁸ MAGNET, ITEM 166 MUST BE ORIENTED CORRECTLY IN ORDER TO PROPERLY ACTUATE THE COUNTER.
- ⁹ CRIMP HEIGHT REFERENCE SETTING WAS THE SETTING USED WHEN THE APPLICATOR WAS QUALIFIED AT THE FACTORY. ADJUSTMENT MAY BE NECESSARY WHEN RUNNING APPLICATOR IN THE FIELD.
- ¹⁰ TERMINAL PITCH NOT COMPATIBLE WITH MECHANICAL FEED.
- ¹¹ WHEN ASSEMBLING -6 NON-CRIMP HEIGHT ADJUST APPLICATOR USE SHIM PACK 2119957-2 TO ALIGN APPLICATOR'S MAXIMUM WIRE CRIMP HEIGHT AT NORMAL TERMINATOR SHUT HEIGHT

***WARNING**
 ON INSTALLATION, SET WIRE DISC, ITEM 40 TO LARGEST WIRE SIZE SETTING. USE OF SETTINGS BELOW MINIMUM REQUIRED CRIMP HEIGHT SETTING WILL CAUSE DAMAGE TO CRIMP TOOLING.

| | | | | | | | |
|-----|----|----|----|----|-----------|---------------------------------|---------|
| - | - | 1 | - | - | 2119957-2 | APPLICATOR SHIM PACK | 260 |
| - | 1 | - | 1 | 1 | 8-21084-0 | O-RING, .676 ID, .070 DIA. MAT. | 252 |
| - | - | - | - | 1 | 2119640-1 | PUSH ROD, AIR FEED | 250 |
| - | - | - | - | 1 | 2079988-1 | BUSHING, LCH5-12, MISUMI | 249 |
| -77 | -7 | -6 | -5 | -2 | PART NO | DESCRIPTION | ITEM NO |

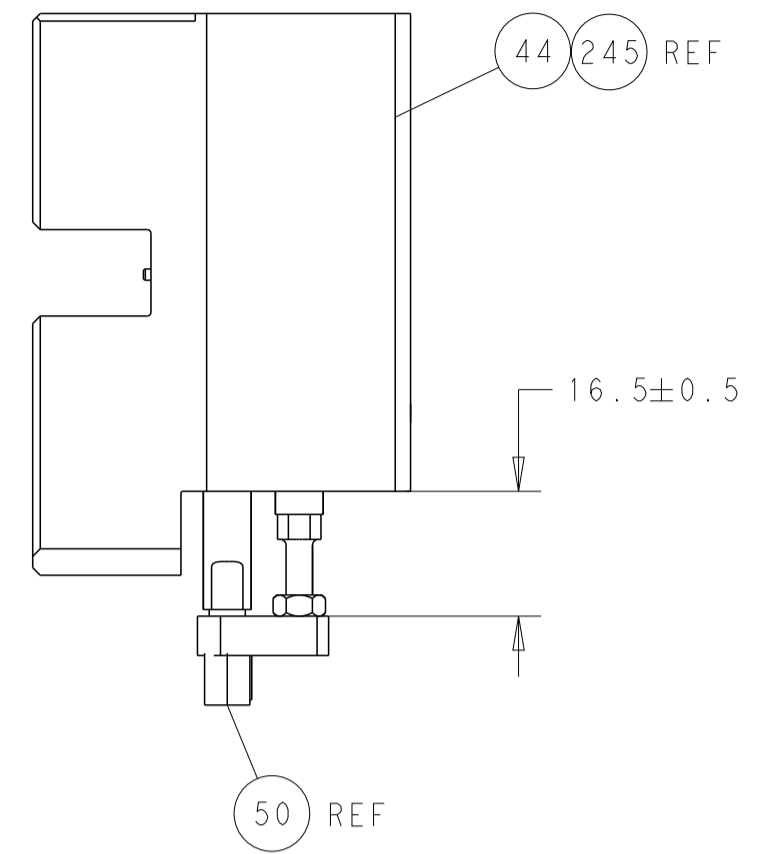
ATLANTIC VERSION
 Shown on sheets 1 of 4 & 2 of 4
 (Pacific version shown on sheets 3 of 4 & 4 of 4)

| SET UP GAUGE | LOC | DIST | REVISIONS | | | | | |
|--------------|-----|------|-----------|-----|---------------|-----------|-----|------|
| 2119599-2 | A | 66 | P | LTM | DESCRIPTION | DATE | OWN | APVD |
| | | | A | | RELEASED | 21JAN2013 | KH | SX |
| | | | B | | ECR-17-002904 | 28FEB2017 | RS | LZ |
| | | | B1 | | ECR-17-003494 | 21MAR2017 | TB | TE |

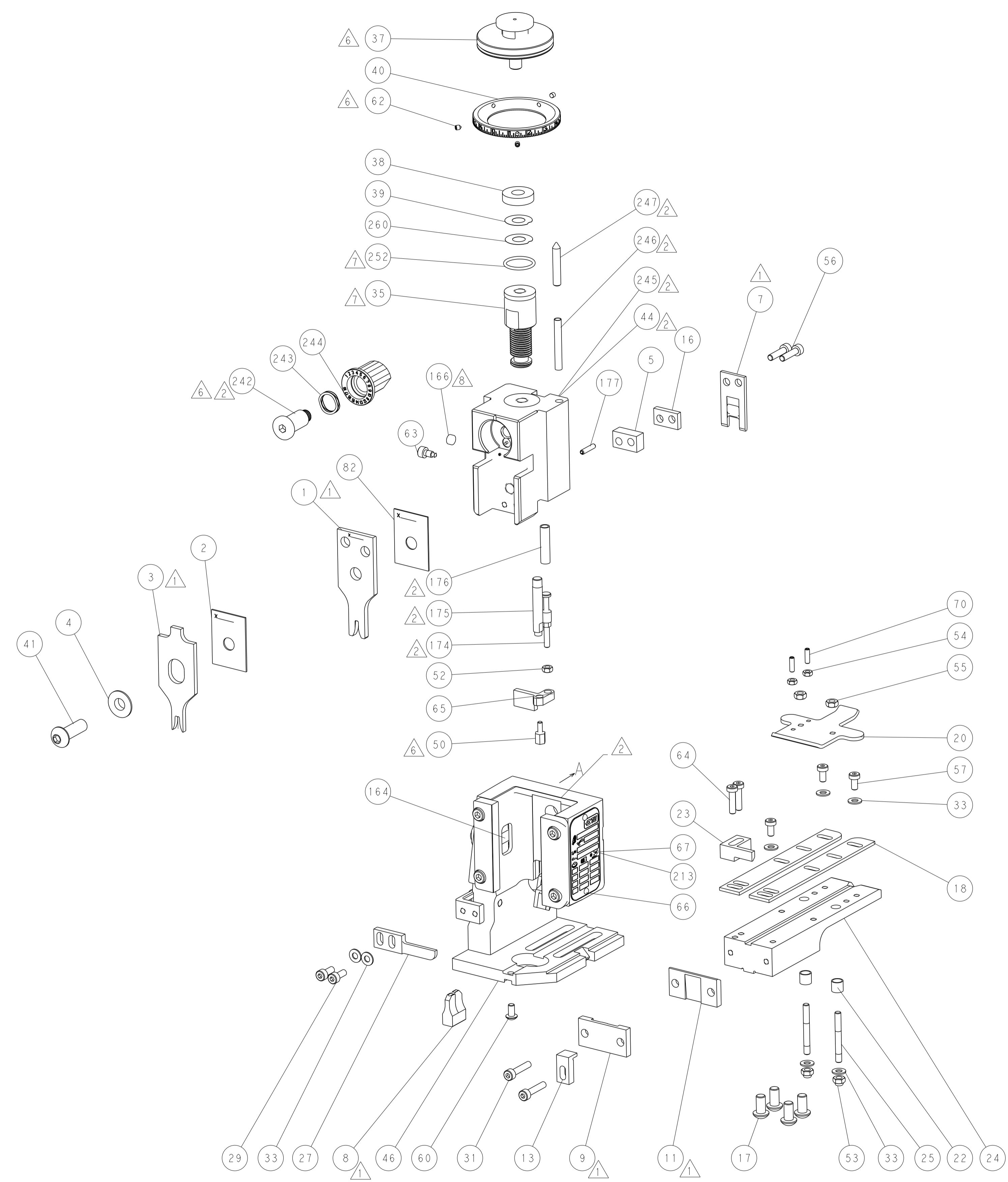
| | | | | | | | |
|--------------|--------|--------|--------|--------|-------------|--------------------------------------|---------|
| - | - | - | - | 1 | 2119641-1 | FEED CAM, AIR FEED | 248 |
| - | 1 | - | 1 | 1 | 2119798-1 | DETENT PIN | 247 |
| - | 1 | - | 1 | 1 | 1-22279-3 | SPRING, COMPRESSION | 246 |
| - | - | 1 | - | - | 2119759-1 | RAM, AMP STYLE, END FEED, NON-ADJUST | 245 |
| - | 1 | 1 | 1 | 1 | 2119082-9 | CAM, SNAIL, INSULATION ADJUSTMENT | 244 |
| - | 1 | 1 | 1 | 1 | 2079764-1 | WASHER, WAVE SPRING, CREST-TO-CREST | 243 |
| ⁶ | - | 1 | 1 | 1 | 2119083-1 | RETAINER, INSULATION DIAL | 242 |
| - | - | 2 | 2 | - | 2168400-7 | SHCS, LOW HEAD, RoHS, M5 X 10 | 240 |
| - | - | - | - | 1 | 2063440-2 | AIR FEED MODULE | 238 |
| - | - | 1 | 1 | - | 2119740-2 | TAG, IDENTIFICATION | 213 |
| - | - | REFREF | - | - | 1803052-1 | FEED FINGER ASSEMBLY, EF | 183 |
| - | 1 | 1 | 1 | 1 | 6-993111-6 | PIN, SLOTTED SPRING 3.0 X 14.0 | 177 |
| - | 1 | 1 | 1 | 1 | 8-22280-7 | SPRING, COMPRESSION | 176 |
| - | 1 | 1 | 1 | 1 | 1752353-2 | GUIDE PIN, HOLDDOWN | 175 |
| - | 1 | 1 | 1 | 1 | 1901680-2 | GUIDE PIN, HOLDDOWN | 174 |
| - | - | - | - | 2 | 21045-3 | RING, RETAIN, EXTERN, 3/16 CRESCENT | 172 |
| - | 1 | 1 | 1 | 1 | 994969-1 | MAGNET, RARE EARTH HIGH ENERGY | 166 |
| - | REFREF | REFREF | REFREF | REFREF | 994970-2 | COUNTER, MAGNETIC | 164 |
| - | - | - | - | 1 | 240638-1 | SPRING, FEED FINGER | 163 |
| - | - | - | - | 1 | 3-23627-7 | PIN, RETAIN, GRVD, 3/16 X .854 | 137 |
| - | - | REFREF | - | - | SEE NOTE 4 | MEMORY CHIP, PROGRAMMED | 135 |
| - | - | 1 | 1 | - | 1633743-1 | SERVO FEED LATCH ASM | 133 |
| - | 1 | 1 | 1 | 1 | 455888-6 | SPACER, CRIMPER | 82 |
| - | 1 | 1 | 1 | 1 | 2119956-2 | DOCUMENTATION PACKAGE | 71 |
| - | 2 | 2 | 2 | 2 | 2-18032-2 | SCR, SET, FLT POINT M3 X 10.0 | 70 |
| - | 1 | - | - | 1 | 2119740-1 | TAG, IDENTIFICATION | 67 |
| - | 2 | 2 | 2 | 2 | 2168078-1 | SCREW, DRIVE, RH, RoHS, 2 x .188 | 66 |
| - | 1 | 1 | 1 | 1 | 1976052-1 | HOLDDOWN, TERMINAL | 65 |
| - | 2 | 2 | 2 | 2 | 2168400-8 | SHCS, LOW HEAD, RoHS, M4 X 16 | 64 |
| ⁶ | - | 3 | - | 3 | 992763-5 | SCR, SET, SOC, CONE POINT, M3 X 4.0 | 62 |
| - | 1 | 1 | 1 | 1 | 2079383-4 | SCR, BHSC, RoHS (M4 X 8) | 60 |
| - | 3 | 3 | 3 | 3 | 2168400-4 | SHCS, LOW HEAD, RoHS, M4 X 8 | 57 |
| - | 2 | 2 | 2 | 2 | 2168083-8 | SCR, SKT HD CAP, RoHS, M4 X 16 | 56 |
| - | 2 | 2 | 2 | 2 | 5018030-2 | NUT, HEX, REG, RoHS, M4 | 55 |
| - | 2 | 2 | 2 | 2 | 5018030-1 | NUT, HEX, REG, RoHS, M3 | 54 |
| - | 2 | 2 | 2 | 2 | 986965-8 | NUT, LOCK, HEX, TORQUE (M4) | 53 |
| - | 1 | 1 | 1 | 1 | 1-5018030-0 | NUT, HEX, REG, RoHS, M3.5 | 52 |
| ⁶ | - | - | - | 1 | 2031314-1 | FEED FINGER SUBASSEMBLY | 51 |
| - | 1 | 1 | 1 | 1 | 1-1752354-2 | STANDOFF, HOLD-DOWN | 50 |
| - | - | - | - | 1 | 18023-9 | SCR, SKT HD CAP M4 X 6.0 | 49 |
| - | 1 | 1 | 1 | 1 | 2119655-5 | APPLICATOR BASIC ASSEMBLY, EF | 46 |
| - | 1 | - | 1 | 1 | 2119369-1 | RAM, AMP STYLE, END FEED | 44 |
| - | 1 | 1 | 1 | 1 | 2079383-7 | SCR, BHSC, RoHS (M8 X 25) | 41 |
| - | 1 | - | 1 | 1 | 2119645-1 | DISC, NUMBERED FA WIRE ADJUSTMENT | 40 |
| - | 1 | - | 1 | 1 | 2119957-1 | APPLICATOR SHIM PACK | 39 |
| ⁶ | - | 1 | 1 | 1 | 2119644-2 | RAM WASHER, PRECISION | 38 |
| ¹ | - | 1 | 1 | 1 | 2119085-1 | FA HEAD, ATLANTIC STYLE | 37 |
| ¹ | - | 1 | - | 1 | 2119092-1 | BOLT, ADJUSTMENT | 35 |
| - | 7 | 7 | 7 | 7 | 1-18028-2 | WASHER, FLAT, REG M4 | 33 |
| - | 2 | 2 | 2 | 2 | 2168083-9 | SCR, SKT HD CAP, RoHS, M4 X 20 | 31 |
| - | 2 | 2 | 2 | 2 | 1-2168083-0 | SCR, SKT HD CAP, RoHS, M4 X 10 | 29 |
| - | 1 | 1 | 1 | 1 | 240639-1 | STRIPPER (MACHINING) | 27 |
| - | 2 | 2 | 2 | 2 | 1320906-1 | STUD, THREADED | 25 |
| - | 1 | 1 | 1 | 1 | 1-1752371-7 | PLATE, STRIP GUIDE | 24 |
| - | 1 | 1 | 1 | 1 | 240825-1 | PLATE, STRIP HOLD DOWN | 23 |
| - | 2 | 2 | 2 | 2 | 22281-8 | SPRING, COMPRESSION | 22 |
| - | 1 | 1 | 1 | 1 | 1752373-4 | DRAG | 20 |
| - | 2 | 2 | 2 | 2 | 1901259-4 | GUIDE, LOWER STRIP | 18 |
| - | 4 | 4 | 4 | 4 | 1-2079383-1 | SCR, BHSC, RoHS (M6 X 12) | 17 |
| - | 1 | 1 | 1 | 1 | 240641-1 | SPACER | 16 |
| - | 1 | 1 | 1 | 1 | 1752360-1 | SPACER, HOLD-DOWN | 13 |
| ¹ | - | 1 | 1 | 1 | 240833-1 | PLATE, REAR SHEAR | 11 |
| - | - | - | - | - | - | - | 10 |
| ¹ | - | 1 | 1 | 1 | 690482-7 | PLATE, FRONT SHEAR | 9 |
| ¹ | 1 | 1 | 1 | 1 | 1803074-1 | ANVIL, COMBINATION, END FEED | 8 |
| ¹ | - | 1 | 1 | 1 | 3-690474-9 | BLADE, SLUG | 7 |
| - | - | - | - | - | - | - | 6 |
| - | 1 | 1 | 1 | 1 | 2-240641-7 | SPACER | 5 |
| - | 1 | 1 | 1 | 1 | 238009-1 | BLOCK, FL CRIMPER SPACER | 4 |
| ¹ | 1 | 1 | 1 | 1 | 2-1633961-3 | CRIMPER, INSULATION F PREMIUM | 3 |
| - | 1 | 1 | 1 | 1 | 455888-8 | SPACER, CRIMPER | 2 |
| ¹ | 1 | 1 | 1 | 1 | 1-456406-5 | CRIMPER, WIRE PREMIUM | 1 |
| -77 | -7 | -6 | -5 | -2 | PART NO | DESCRIPTION | ITEM NO |

| | | | | | | | | | |
|-------------|--|--|--|------------------|--|-----------|--|----------------|--|
| DIMENSIONS: | | TOLERANCES UNLESS OTHERWISE SPECIFIED: | | DWG | | CHK | | SHEET | |
| mm | | 0 PLC ± | | R. HUANG | | 290CT2012 | | 290CT2012 | |
| | | 1 PLC ± | | S. XI | | S. XI | | S. XI | |
| | | 2 PLC ± | | APVD | | 290CT2012 | | NAME | |
| | | 3 PLC ± | | S. XI | | 290CT2012 | | Ocean End Feed | |
| | | 4 PLC ± | | PRODUCT SPEC | | | | Applicator | |
| | | ANGLES ± | | APPLICATION SPEC | | | | SIZE | |
| | | FINISH ± | | WEIGHT | | A1 | | 00779 | |
| MATERIAL | | | | SCALE | | 1:1 | | SHEET 1 OF 4 | |
| | | | | RESTRICTED TO | | | | REV B1 | |

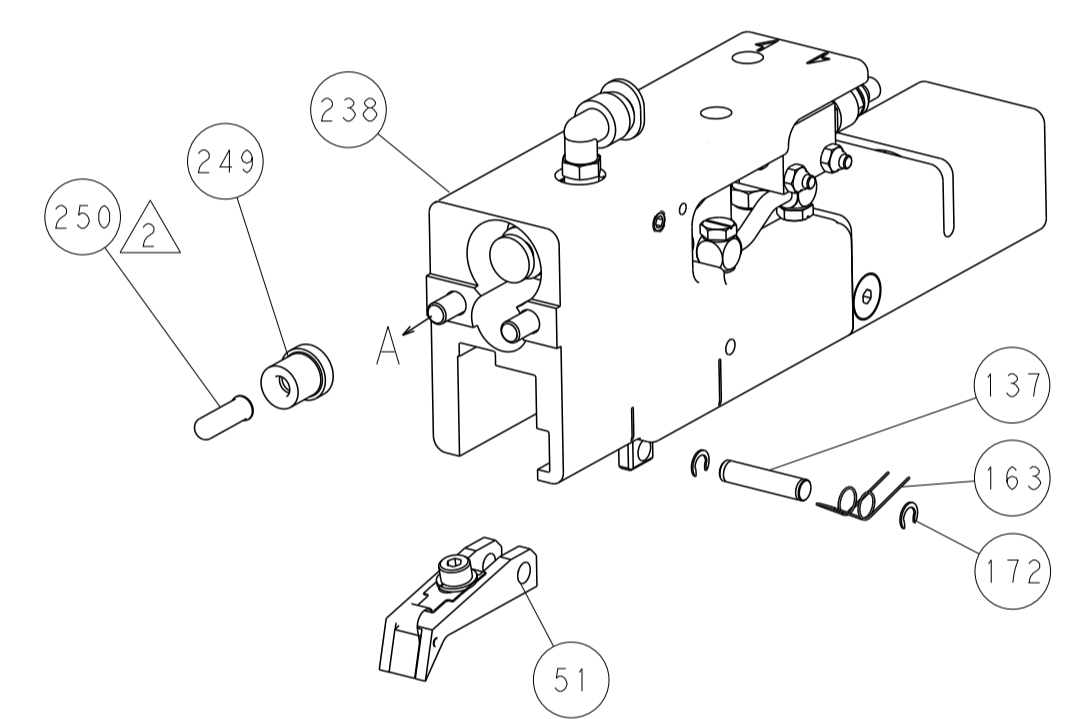
| LOC | DIST | REV | DATE | BY | APPV |
|-----------|------|-----|-------------|------|------|
| A | 66 | | | | |
| REVISIONS | | | DESCRIPTION | DATE | BY |
| - | | | SEE SHEET 1 | - | - |



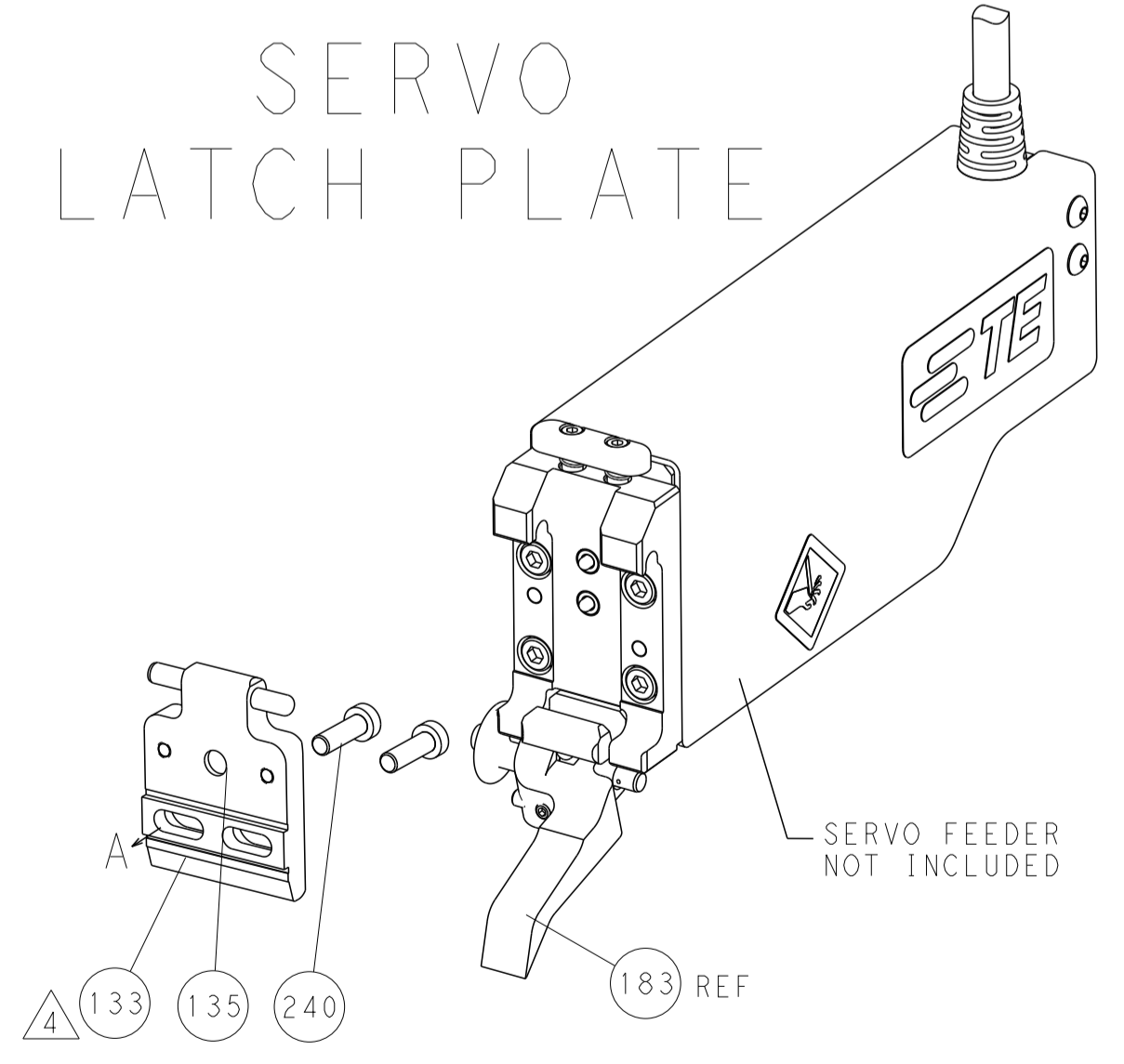
HOLDDOWN SET-UP



FEED TYPE

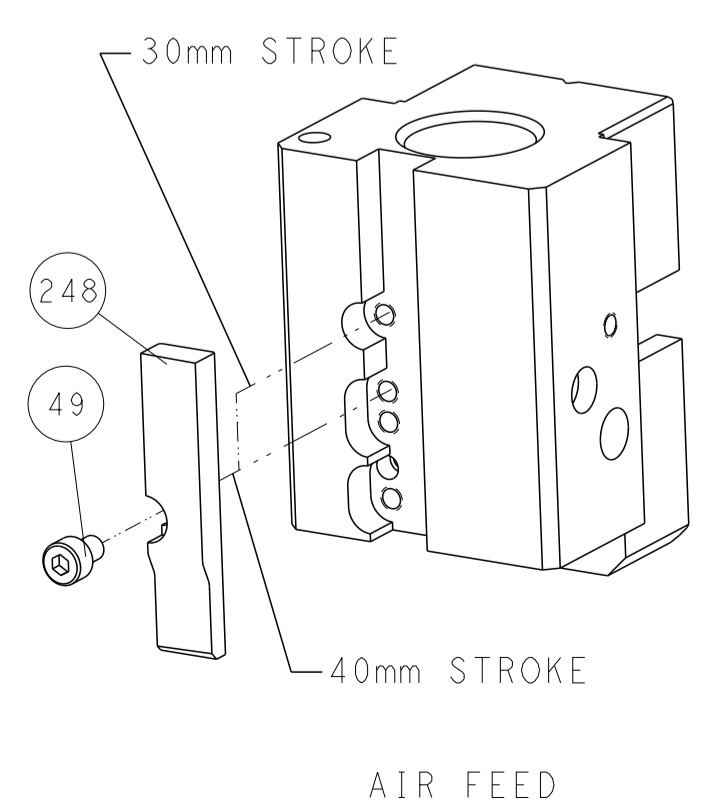


PNEUMATIC



SERVO LATCH PLATE

CAM POSITION



AIR FEED

ATLANTIC VERSION
 Shown on sheets 1 of 4 & 2 of 4
 (Pacific version shown on sheets 3 of 4 & 4 of 4)

| | | | | |
|---|--|---|---|--|
| <small>THIS DRAWING IS UNPUBLISHED. RELEASED FOR PUBLICATION BY TYCO ELECTRONICS CORPORATION. ALL RIGHTS RESERVED.</small> | | DWN: K. HUANG CHK: S. XI APVD: S. XI PRODUCT SPEC: - APPLICATION SPEC: - WEIGHT: - SCALE: 1:1 | 29OCT2012 29OCT2012 29OCT2012 NAME: Ocean End Feed Applicator SIZE: A1 CAGE CODE: 00779 DRAWING NO: C-2150297 SHEET 2 OF 4 REV B1 | TE Connectivity Harrisburg, PA 17105-3608 |
| DIMENSIONS: mm TOLERANCES UNLESS OTHERWISE SPECIFIED: 0 PLC ± 1 PLC ± 2 PLC ± 3 PLC ± 4 PLC ± ANGLES ± MATERIAL: - FINISH: - | | RESTRICTED TO: - Customer Accessible Production Drawing | | |

| PACIFIC VERSION TERMINATOR INTERFACE ADAPTER | PART NUMBER | REVISION | DESCRIPTION | FEED TYPE | APPLICATOR STYLE CONVERSION CHART | | | | | |
|--|-------------|--------------------------|--------------------------|--------------------------------|-----------------------------------|-----------------------|-----------|-------------|---|------------------------|
| | | | | | CONVERT TO | PART NUMBERS REQUIRED | | | | |
| | 2-2150297-2 | B | FINE CRIMP HEIGHT ADJUST | PNEUMATIC | - | - | - | - | - | - |
| | | | | | SERVO LATCH PLATE | 2119951-1 | 1803052-1 | 8-2150297-5 | - | 2168400-7 (QUANTITY 2) |
| | | | | | SMART APPLICATOR | 2161326-1 | - | 8-2150297-4 | - | - |
| | 2-2150297-5 | B | FINE CRIMP HEIGHT ADJUST | SERVO LATCH PLATE ⁴ | - | - | - | - | - | - |
| 2-2150297-7 | B | FINE CRIMP HEIGHT ADJUST | NONE | - | - | - | - | - | - | |
| 7-2150297-7 | A | CRIMP TOOLING KIT | - | - | - | - | - | - | - | |

| APPLICATOR DATA | | |
|--------------------------------------|----------------|------|
| CRIMP | SIZE | TYPE |
| WIRE | 2.29 mm (.090) | F |
| INSUL | 3.56 mm (.140) | F |
| APPLICATOR INSTRUCTIONS 408-10390 | | |

| TERMINAL DATA: TE TERMINAL | | TE CRIMP SPECIFICATION | |
|--|-------------|---|-------------|
| TERMINAL NAME: RECPT, POSITIVE LOCK, .250 SERIES | | | |
| WIRE STRIP LENGTH 4.40-5.17 mm (.173-.204 IN) | | INSULATION DIAMETER RANGE Ø1.52-2.54 mm (.060-.100 IN) | |
| TERMINAL APPLICATION SPECIFICATION | 114-2074 | - | - |
| TERMINALS APPLIED ¹⁰ | | | |
| TE TERMINAL | TE TERMINAL | TE TERMINAL | TE TERMINAL |
| 63119-1 | 63119-2 | 2238156-1 | 2238156-2 |
| 2238141-1 | | | |

| WIRE SIZE | CRIMP HEIGHT mm [INCH] | CRIMP HEIGHT REFERENCE SETTING ⁹ |
|-----------|----------------------------|---|
| 18 AWG | 1.55+/-0.05 [.061+/-0.002] | 10.5 |
| 20 AWG | 1.45+/-0.05 [.057+/-0.002] | 11.4 |
| 22 AWG | 1.37+/-0.05 [.054+/-0.002] | 11.7 |

- RECOMMENDED SPARE PARTS
- GREASE BEARING SURFACES LIGHTLY
- 3. LUBRICATE DAILY PER THE APPLICATOR INSTRUCTION SHEET SUPPLIED WITH THE APPLICATOR.
- APPLICATOR SPECIFIC DATA TO BE ENTERED INTO BLANK MEMORY CHIP AT ASSEMBLY. SEE BELOW FOR PART NUMBER:
 PNEUMATIC FEED WITH "SMART APPLICATOR" CONVERSION: 8-2150297-4
 SERVO FEED WITH "FINE CRIMP HEIGHT ADJUST": 8-2150297-5
- 5. ADJUSTMENT OF THE STRIPPER MAY BE REQUIRED WHEN MOVING THE APPLICATOR BETWEEN BENCH AND LEADMAKER APPLICATIONS.
- APPLY PART NUMBER 1-23419-5 LOCTITE TO THREADS OF ITEMS 50 & 62. APPLY PART NUMBER 2-23419-6 TO THREADS OF ITEM 242.
- GREASE THREADS, GROOVE AND O-RING ON ITEMS 139 & 153.
- MAGNET, ITEM 166 MUST BE ORIENTED CORRECTLY IN ORDER TO PROPERLY ACTUATE THE COUNTER.
- CRIMP HEIGHT REFERENCE SETTING WAS THE SETTING USED WHEN THE APPLICATOR WAS QUALIFIED AT THE FACTORY. ADJUSTMENT MAY BE NECESSARY WHEN RUNNING APPLICATOR IN THE FIELD.
- TERMINAL PITCH NOT COMPATIBLE WITH MECHANICAL FEED.

| - | 1 | 1 | 1 | 2119782-1 | FINE ADJUST HEAD ASM, PACIFIC STYLE | 251 |
|--------------|---|---|---|-----------|-------------------------------------|---------|
| - | - | - | 1 | 2119640-1 | PUSH ROD, AIR FEED | 250 |
| -77-27-25-22 | | | | PART NO | DESCRIPTION | ITEM NO |

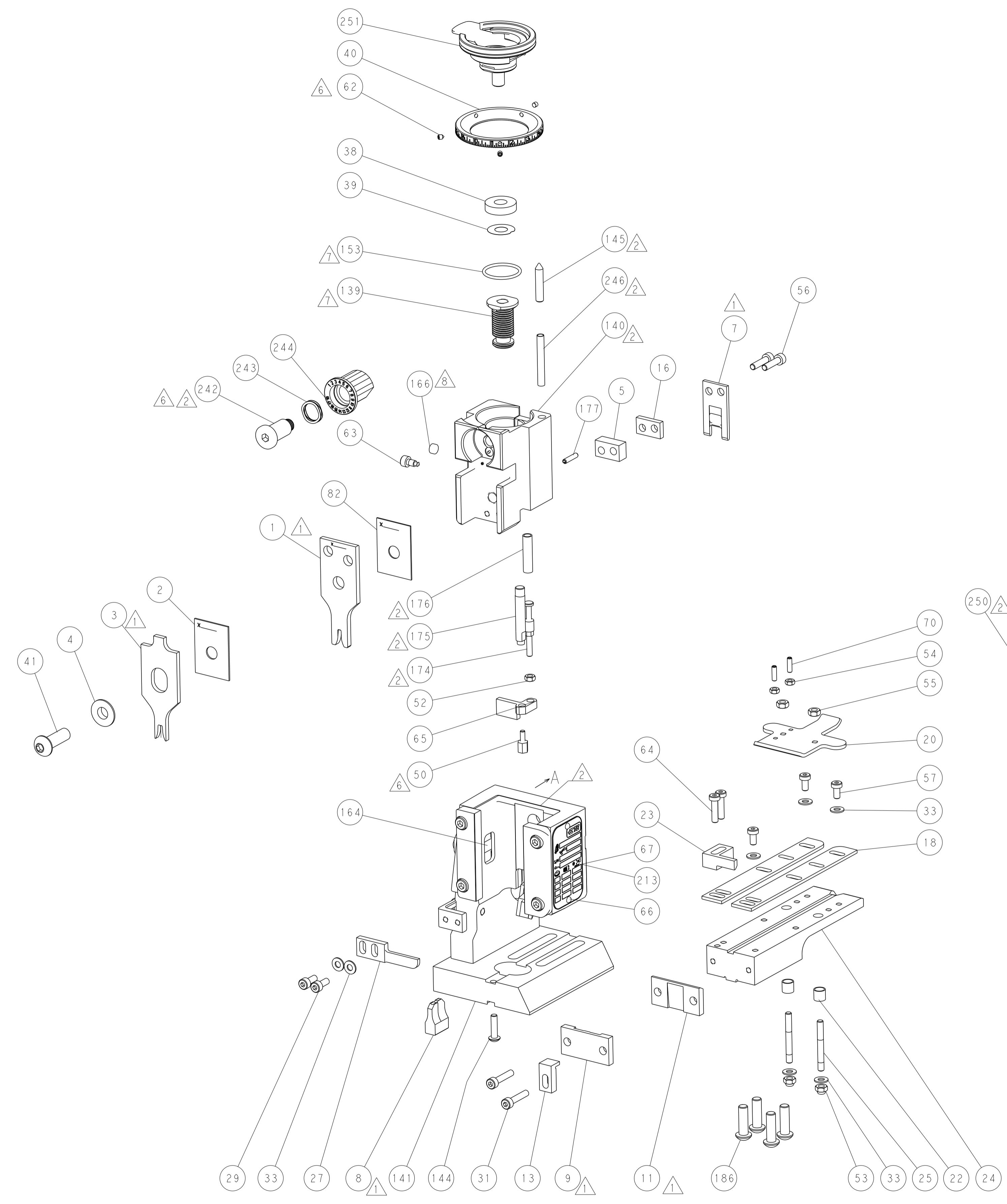
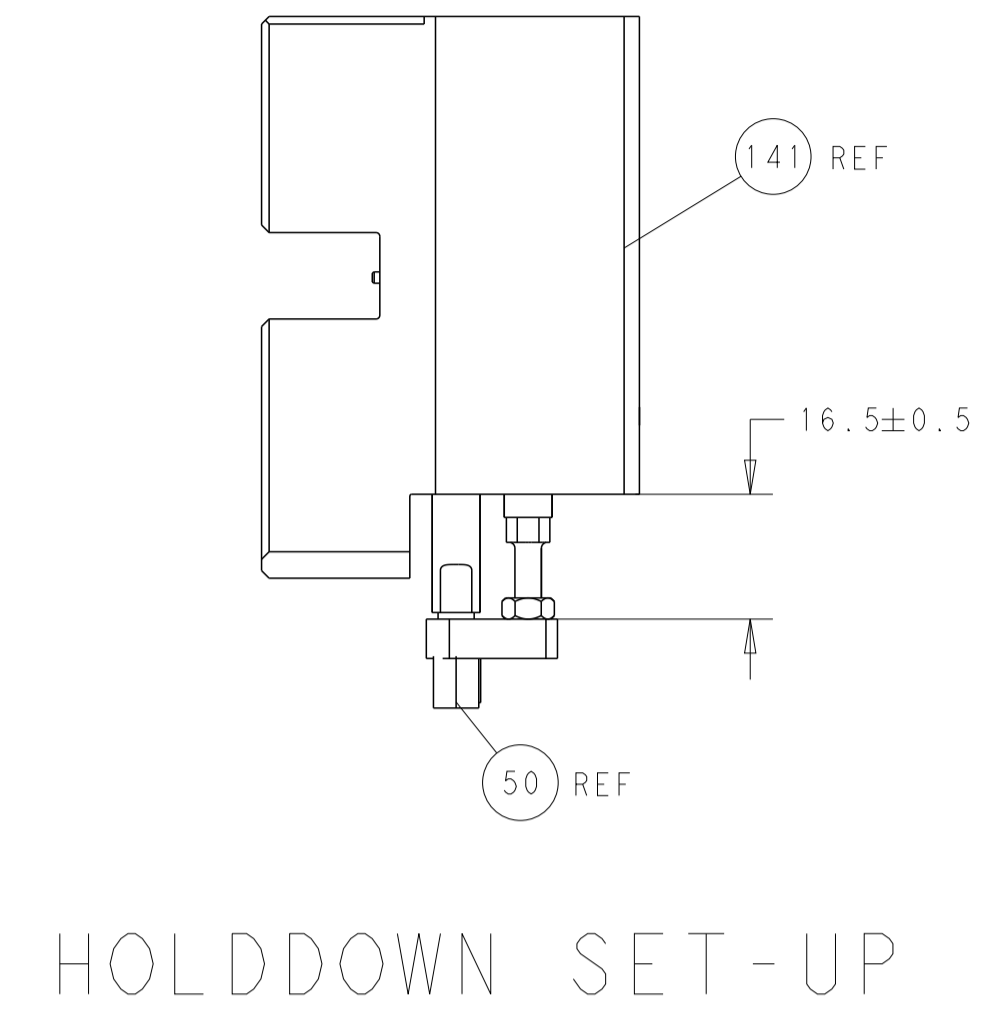
PACIFIC VERSION
 Shown on sheets 3 of 4 & 4 of 4
 (Atlantic version shown on sheets 1 of 4 & 2 of 4)

| SET UP GAUGE | LOC | DIST | REVISIONS | | | |
|--------------|-----|------|-----------|-------------|----|------|
| 2119599-2 | A | 66 | REV | DATE | BY | APPV |
| | | | - | SEE SHEET 1 | - | - |

| | | | | | | |
|--------------|-----|-----|-----|-------------|-------------------------------------|---------|
| - | - | - | 1 | 2079988-1 | BUSHING, LCH5-12, MISUMI | 249 |
| - | 1 | 1 | 1 | 1-22279-3 | SPRING, COMPRESSION | 246 |
| - | 1 | 1 | 1 | 2119082-9 | CAM, SNAIL, INSULATION ADJUSTMENT | 244 |
| - | 1 | 1 | 1 | 2079764-1 | WASHER, WAVE SPRING, CREST-TO-CREST | 243 |
| - | 1 | 1 | 1 | 2119083-1 | RETAINER, INSULATION DIAL | 242 |
| - | - | 2 | - | 2168400-7 | SHCS, LOW HEAD, RoHS, M5 X 10 | 240 |
| - | - | - | 1 | 2063440-2 | AIR FEED MODULE | 238 |
| - | - | 1 | - | 2119740-2 | TAG, IDENTIFICATION | 213 |
| - | 4 | 4 | 4 | 2079383-9 | SCR, BHSC, RoHS (M6 X 20) | 186 |
| - | - | REF | - | 1803052-1 | FEED FINGER ASSEMBLY, EF | 183 |
| - | 1 | 1 | 1 | 6-993111-6 | PIN, SLOTTED SPRING 3.0 X 14.0 | 177 |
| - | 1 | 1 | 1 | 8-22280-7 | SPRING, COMPRESSION | 176 |
| - | 1 | 1 | 1 | 1752353-2 | GUIDE PIN, HOLDDOWN | 175 |
| - | 1 | 1 | 1 | 1901680-2 | GUIDE PIN, HOLDDOWN | 174 |
| - | - | - | 2 | 21045-3 | RING, RETAIN, EXTERN, 3/16 CRESCENT | 172 |
| - | 1 | 1 | 1 | 994969-1 | MAGNET, RARE EARTH HIGH ENERGY | 166 |
| - | REF | REF | REF | 994970-2 | COUNTER, MAGNETIC | 164 |
| - | - | - | 1 | 240638-1 | SPRING, FEED FINGER | 163 |
| - | 1 | 1 | 1 | 8-21084-1 | O-RING, .801 ID, .070 DIA. MAT. | 153 |
| - | - | - | 1 | 2119641-2 | FEED CAM, AIR FEED | 152 |
| - | 1 | 1 | 1 | 2119798-2 | DETENT PIN | 145 |
| - | 1 | 1 | 1 | 2079383-8 | SCR, BHSC, RoHS (M4 X 16) | 144 |
| - | 1 | 1 | 1 | 2119655-6 | APPLICATOR BASIC ASSEMBLY, EF | 141 |
| - | 1 | 1 | 1 | 2119651-1 | RAM, ASIAN STYLE, END FEED | 140 |
| - | 1 | 1 | 1 | 2119092-2 | BOLT, ADJUSTMENT | 139 |
| - | - | - | 1 | 3-23627-7 | PIN, RETAIN, GRVD, 3/16 X .854 | 137 |
| - | - | REF | - | SEE NOTE 4 | MEMORY CHIP, PROGRAMMED | 135 |
| - | - | 1 | - | 1633743-1 | SERVO FEED LATCH ASM | 133 |
| - | 1 | 1 | 1 | 455888-6 | SPACER, CRIMPER | 82 |
| - | 1 | 1 | 1 | 2119956-2 | DOCUMENTATION PACKAGE | 71 |
| - | 2 | 2 | 2 | 2-18032-2 | SCR, SET, FLT POINT M3 X 10.0 | 70 |
| - | 1 | - | 1 | 2119740-1 | TAG, IDENTIFICATION | 67 |
| - | 2 | 2 | 2 | 2168078-1 | SCREW, DRIVE, RH, RoHS, 2 x .188 | 66 |
| - | 1 | 1 | 1 | 1976052-1 | HOLDDOWN, TERMINAL | 65 |
| - | 2 | 2 | 2 | 2168400-8 | SHCS, LOW HEAD, RoHS, M4 X 16 | 64 |
| - | 1 | 1 | 1 | 2119793-1 | LIMITER, ADJUSTMENT BOLT | 63 |
| - | 3 | 3 | 3 | 992763-5 | SCR, SET, SOC, CONE POINT, M3 x 4.0 | 62 |
| - | 3 | 3 | 3 | 2168400-4 | SHCS, LOW HEAD, RoHS, M4 X 8 | 57 |
| - | 2 | 2 | 2 | 2168083-8 | SCR, SKT HD CAP, RoHS, M4 X 16 | 56 |
| - | 2 | 2 | 2 | 5018030-2 | NUT, HEX, REG, RoHS, M4 | 55 |
| - | 2 | 2 | 2 | 5018030-1 | NUT, HEX, REG, RoHS, M3 | 54 |
| - | 2 | 2 | 2 | 986965-8 | NUT, LOCK, HEX, TORQUE (M4) | 53 |
| - | 1 | 1 | 1 | 1-5018030-0 | NUT, HEX, REG, RoHS, M3.5 | 52 |
| - | - | - | 1 | 2031314-1 | FEED FINGER SUBASSEMBLY | 51 |
| - | 1 | 1 | 1 | 1-1752354-2 | STANDOFF, HOLD-DOWN | 50 |
| - | - | - | 1 | 18023-9 | SCR, SKT HD CAP M4 X 6.0 | 49 |
| - | 1 | 1 | 1 | 2079383-7 | SCR, BHSC, RoHS (M8 X 25) | 41 |
| - | 1 | 1 | 1 | 2119645-1 | DISC, NUMBERED FA WIRE ADJUSTMENT | 40 |
| - | 1 | 1 | 1 | 2119957-1 | APPLICATOR SHIM PACK | 39 |
| - | 1 | 1 | 1 | 2119644-2 | RAM WASHER, PRECISION | 38 |
| - | 7 | 7 | 7 | 1-18028-2 | WASHER, FLAT, REG M4 | 33 |
| - | 2 | 2 | 2 | 2168083-9 | SCR, SKT HD CAP, RoHS, M4 X 20 | 31 |
| - | 2 | 2 | 2 | 1-2168083-0 | SCR, SKT HD CAP, RoHS, M4 X 10 | 29 |
| - | 1 | 1 | 1 | 240639-1 | STRIPPER (MACHINING) | 27 |
| - | 2 | 2 | 2 | 1320906-1 | STUD, THREADED | 25 |
| - | 1 | 1 | 1 | 1-1752371-7 | PLATE, STRIP GUIDE | 24 |
| - | 1 | 1 | 1 | 240825-1 | PLATE, STRIP HOLD DOWN | 23 |
| - | 2 | 2 | 2 | 22281-8 | SPRING, COMPRESSION | 22 |
| - | 1 | 1 | 1 | 1752373-4 | DRAG | 20 |
| - | 2 | 2 | 2 | 1901259-4 | GUIDE, LOWER STRIP | 18 |
| - | 1 | 1 | 1 | 240641-1 | SPACER | 16 |
| - | 1 | 1 | 1 | 1752360-1 | SPACER, HOLD-DOWN | 13 |
| - | 1 | 1 | 1 | 240833-1 | PLATE, REAR SHEAR | 11 |
| - | - | - | - | - | - | 10 |
| - | 1 | 1 | 1 | 690482-7 | PLATE, FRONT SHEAR | 9 |
| - | 1 | 1 | 1 | 1803074-1 | ANVIL, COMBINATION, END FEED | 8 |
| - | 1 | 1 | 1 | 3-690474-9 | BLADE, SLUG | 7 |
| - | - | - | - | - | - | 6 |
| - | 1 | 1 | 1 | 2-240641-7 | SPACER | 5 |
| - | 1 | 1 | 1 | 238009-1 | BLOCK, FL CRIMPER SPACER | 4 |
| - | 1 | 1 | 1 | 2-1633961-3 | CRIMPER, INSULATION F PREMIUM | 3 |
| - | 1 | 1 | 1 | 455888-8 | SPACER, CRIMPER | 2 |
| - | 1 | 1 | 1 | 1-456406-5 | CRIMPER, WIRE PREMIUM | 1 |
| -77-27-25-22 | | | | PART NO | DESCRIPTION | ITEM NO |

| DIMENSIONS: | | TOLERANCES UNLESS OTHERWISE SPECIFIED: | | DRAWING NO | |
|-------------|---------|--|----------|---------------------------|-----------|
| mm | 0 PLC ± | 1 PLC ± | 2 PLC ± | 290CT2012 | 290CT2012 |
| | 3 PLC ± | 4 PLC ± | ANGLES ± | NAME | |
| | FINISH | | | Ocean End Feed Applicator | |
| MATERIAL | | WEIGHT | | SIZE | CAGE CODE |
| | | | | A1 | 00779 |
| | | | | SCALE | 1:1 |
| | | | | SHEET | 3 OF 4 |
| | | | | REV | B1 |

| LOC | DIST | REVISIONS | | | | | |
|-----|------|-----------|-----|-------------|------|-----|------|
| A | 66 | P | LTN | DESCRIPTION | DATE | DWN | APVD |
| | | - | | SEE SHEET 1 | | | |

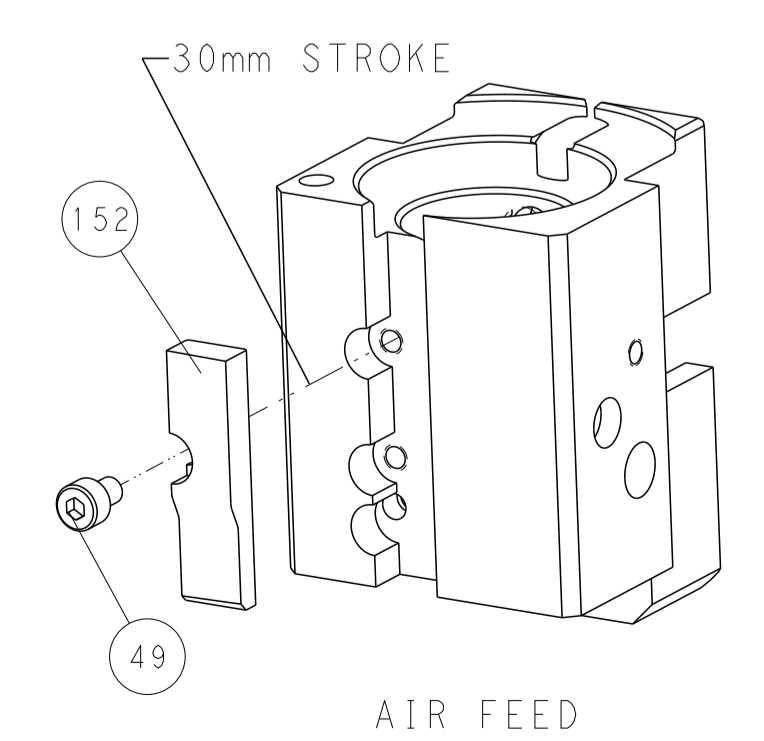


FEED TYPE

PNEUMATIC

SERVO LATCH PLATE

CAM POSITION



PACIFIC VERSION
 Shown on sheets 3 of 4 & 4 of 4
 (Atlantic version shown on sheets 1 of 4 & 2 of 4)

| | | | |
|---|--|---|---|
| <small>THIS DRAWING IS UNPUBLISHED. RELEASED FOR PUBLICATION. ALL RIGHTS RESERVED. © 2012 TYCO ELECTRONICS CORPORATION. THIS PRODUCT IS CONTROLLED TECHNOLOGY. THE INFORMATION CONTAINED HEREIN IS UNCLASSIFIED EXCEPT WHERE SHOWN OTHERWISE. THIS INFORMATION IS CONTROLLED TECHNOLOGY. THE INFORMATION CONTAINED HEREIN IS UNCLASSIFIED EXCEPT WHERE SHOWN OTHERWISE.</small> | | DWN: H. HUANG 29OCT2012 CHK: S. XI 29OCT2012 APVD: S. XI 29OCT2012 | TE Connectivity Harrisburg, PA 17105-3608 |
| DIMENSIONS: mm TOLERANCES UNLESS OTHERWISE SPECIFIED: 0 PLC ± 1 PLC ± 2 PLC ± 3 PLC ± 4 PLC ± ANGLES ° ± FINISH | | NAME: Ocean End Feed Applier PRODUCT SPEC: APPLICATION SPEC: WEIGHT: | SIZE: A1 CAGE CODE: 00779 DRAWING NO: C-2150297 SCALE: 1:1 SHEET: 4 OF 4 REV: B1 |
| MATERIAL: | | RESTRICTED TO: | Customer Accessible Production Drawing |