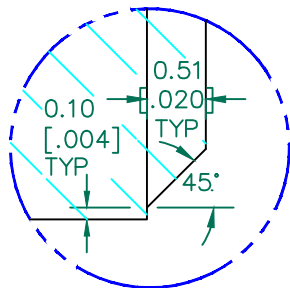
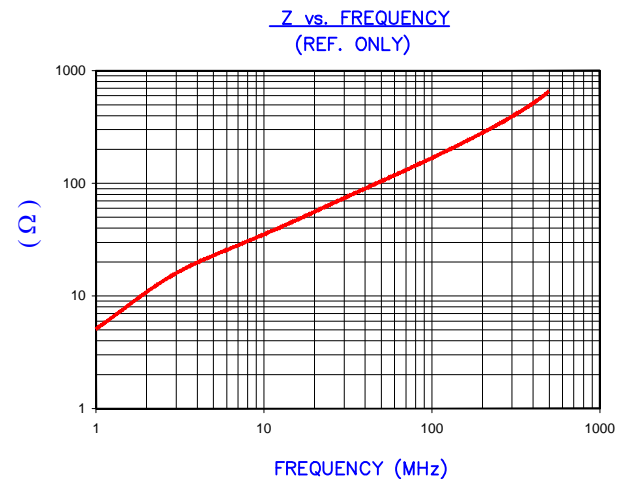


**UNCONTROLLED DOCUMENT**



DETAIL "A"  
CHAMFER  
SCALE: 8:1

IMPEDANCE ( Z )			
Frequency	25 MHz	100 MHz	300 MHz
Nominal (REF)	67 Ω	168 Ω	380 Ω
Minimum	- Ω	134 Ω	- Ω



AGILENT E4991A Impedance/Material Analyzer  
HP 16092A Test Fixture, REF # 2976

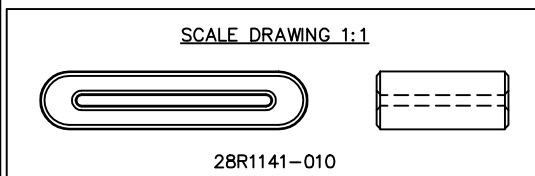
FERRITE CORE DIMENSIONS(SPEC): mm [IN]

A	37.00 [1.457]	+	0.80 [.031]
B	27.00 [1.063]	+	0.80 [.031]
C	18.25 [.7185]	+	1.00 [.039]
D	8.00 [.315]	+	0.50 [.020]
E	1.50 [.059]	+	0.40 [.016]
F	0.749 [.0295]	+	TYP.
G	4.00 [.1575]	+	TYP.

WEIGHT/1000      21.65 kgs      [47.72 Lbs]

NOTES: UNLESS OTHERWISE SPECIFIED

1. COSMETIC SPECIFICATION REFER TO WI-QA-038.



DIMENSIONS ARE IN MM [INCHES]				This print is the property of Laird Tech. and is loaned in confidence subject to return upon request and with the understanding that no copies shall be made without the written consent of Laird Tech. All rights to design or invention are reserved.			
REV	DESCRIPTION	DATE	INT				
H	UPDATE COMPANY LOGO	05/28/15	QIU	PROJECT/PART NUMBER: <b>28R1141-010</b> DATE: 09/13/99 CAD # 28R1141-010-H SCALE: 2 : 1 TOOL # R1141 MATERIAL: <b>FERRITE</b>		REV	DRAWN BY:
G	UPDATE Z SPECS AND COMPANY LOGO	07/27/07	JRK			H	JAJ
F	UPDATE MIN Z SPEC@100 Mhz, ADD REF #	01/29/04	JRK				
E	UPDATE FORMAT CURVE AND Z SPECS	05/05/03	JRK				
D	UPDATE TO CNZ FORMAT, ADD Z CURVE	07/29/02	JRK				
C	CORRECT WEIGHT OF PART, UPDATE Z SPECS IMPEDANCE TESTED, UPDATE PRINT FORMAT	02/25/02	JRK				
B	CORRECT DIMS. "A" & "B" & WEIGHT CORRECT IMPEDANCE, ADD DIMS. "F" & "G" CHANGED DETAIL "A" VIEW	09/21/99	JAJ				
A	ORIGINAL DRAFT	09/13/99	JAJ				
REV	DESCRIPTION	DATE	INT				