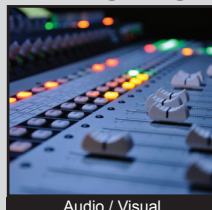


PB300 SERIES PUSHBUTTON SWITCH

ANTI-VANDAL SWITCHES
 DETECTOR SWITCHES
 DIP SWITCHES
 KEYLOCK SWITCHES
 NAVIGATION SWITCHES
PUSHBUTTON SWITCHES
 ROCKER SWITCHES
 ROTARY SWITCHES
 SLIDE SWITCHES
 SNAP ACTION SWITCHES
 TACTILE SWITCHES
 TOGGLE SWITCHES
 CAP OPTIONS



APPLICATIONS / MARKETS



Audio / Visual



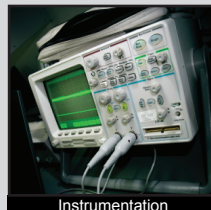
Electrical Housewares



Floor Care Appliances



White Goods



Instrumentation



Medical Equipment

RoHS

SPECIFICATIONS

Electrical Rating: 30mA @ 28VDC
Electrical Life: 20,000 Cycles
Contact Resistance: 50mΩ Max. Initial
Insulation Resistance: 10GΩ Min. @ 1000VDC
Dielectric Strength: 500VAC for 1 minute
Operating Temperature: -40°C to 95°C
Storage Temperature: -40°C to 95°C
Full Travel: 2.0mm
Contact Arrangement: SPST, SPDT
Actuation Force: ST: 490 grams;
 DT 1st position: 600 grams; DT 2nd position: 1150 grams

FEATURES & BENEFITS

- SPST or SPDT/Double action
- Double action: first circuit closes mid travel, second at full travel
- Long travel - 2.0mm
- High actuation force
- Tactile response

PART NUMBER CONFIGURATOR

Series



PB300

Circuit Function



ST - Single Pole, Single Throw, Momentary
 DT - Single Pole, Double Throw (Double Action), Momentary

Contact Material



Q - Silver

Specifications subject to change without notice



E-SWITCH®

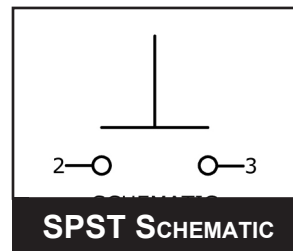
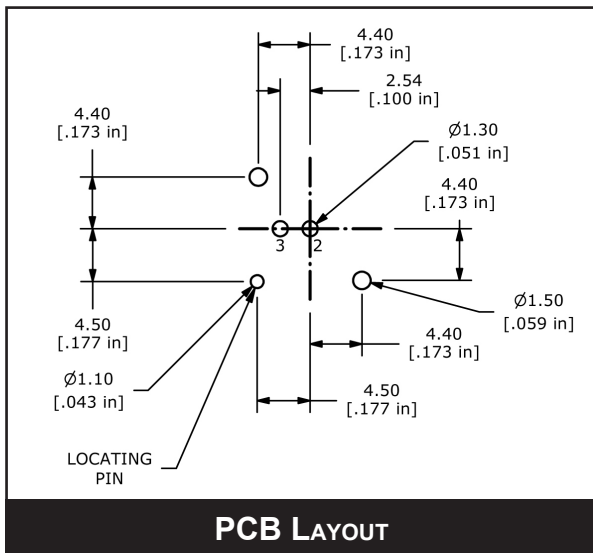
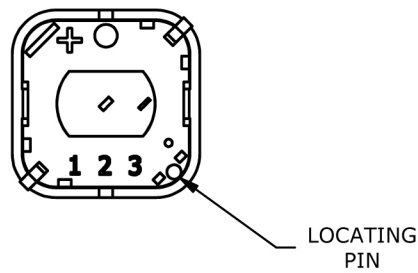
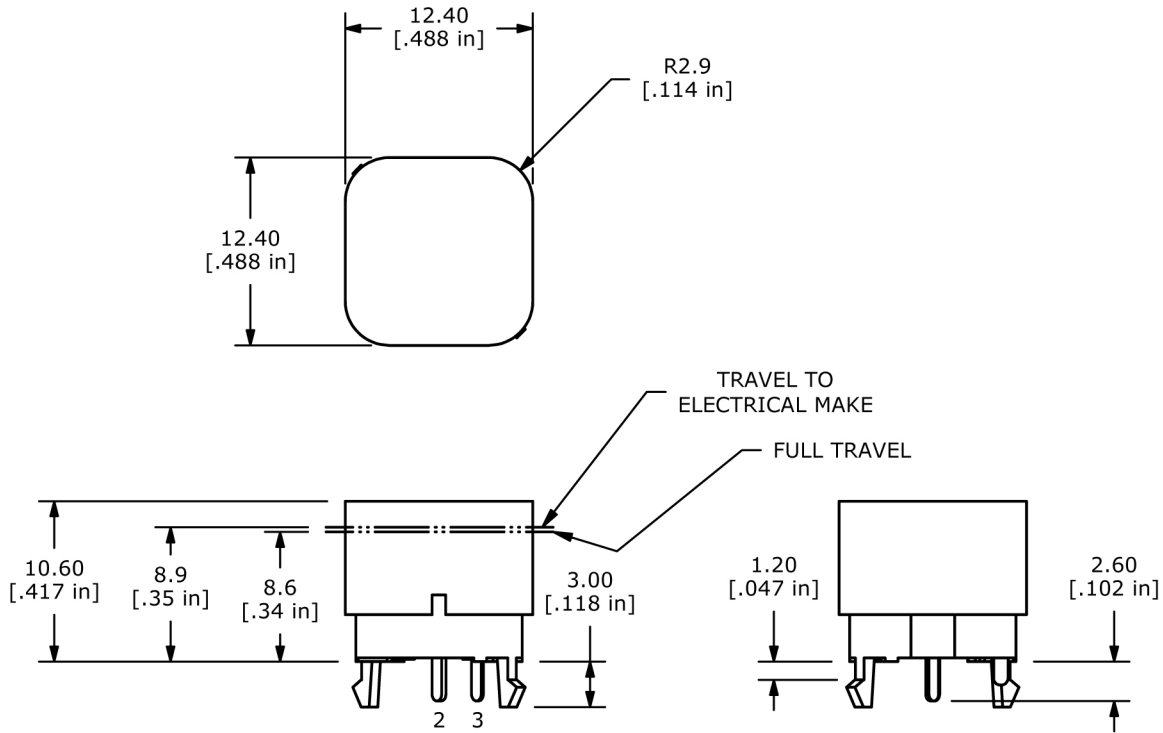
www.e-switch.com

800.867.2717

2

PB300 SERIES PUSHBUTTON SWITCH

SINGLE THROW



- ANTI-VANDAL SWITCHES
- DETECTOR SWITCHES
- DIP SWITCHES
- KEYLOCK SWITCHES
- NAVIGATION SWITCHES
- PUSHBUTTON SWITCHES**
- ROCKER SWITCHES
- ROTARY SWITCHES
- SLIDE SWITCHES
- SNAP ACTION SWITCHES
- TACTILE SWITCHES
- TOGGLE SWITCHES
- CAP OPTIONS

PB300 SERIES PUSHBUTTON SWITCH

DOUBLE THROW

- ANTI-VANDAL SWITCHES
- DETECTOR SWITCHES
- DIP SWITCHES
- KEYLOCK SWITCHES
- NAVIGATION SWITCHES
- PUSHBUTTON SWITCHES**
- ROCKER SWITCHES
- ROTARY SWITCHES
- SLIDE SWITCHES
- SNAP ACTION SWITCHES
- TACTILE SWITCHES
- TOGGLE SWITCHES
- CAP OPTIONS

