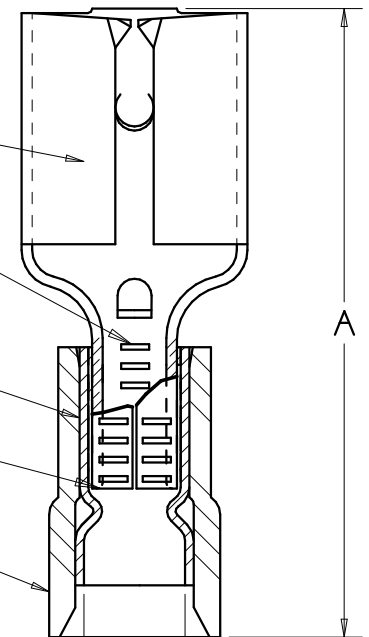
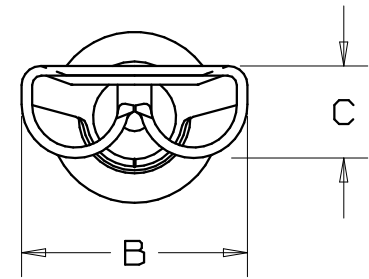


PART NUMBER		TAB SIZE	WIRE RANGE AWG (mm <sup>2</sup> )	HOUSING COLOR	MAX INSUL DIA	DIMENSIONS in		
PREFIX	PKG					A $\pm 0.03$ (0.8)	B $\pm 0.01$ (0.3)	C $\pm 0.01$ (0.3)
DNF18-206	-C -M	.187/.205 X .020 (4.8/5.2 X 0.5)	22-18 (.38-1.0)	RED	.137 (3.48)	.76 (19.3)	.25 (6.4)	.12 (3.0)
DNF14-206	-C -M	.187/.205 X .020 (4.8/5.2 X 0.5)	16-14 (1.5-2.5)	BLUE	.162 (4.11)	.76 (19.3)	.25 (6.4)	.12 (3.0)



NOTES:

- UL LISTED AND CSA CERTIFIED FOR:
  - 300V. MAX. VOLTAGE RATING
  - STRANDED COPPER WIRE ONLY
  - 194° F (90° C) MAX. TEMP. RATING
- PACKAGE QTY: STD. PKG. -C= 100  
BULK PKG. -M= 1000
- MATERIAL:
  - STAMPING: .016 (0.41) THK BRASS, TIN PLATED
  - SLEEVE: BRASS, TIN PLATED
  - HOUSING: NYLON
- WIRE STRIP LENGTH  $9/32 \begin{smallmatrix} +1/32 \\ -0 \end{smallmatrix}$  (7.1  $\begin{smallmatrix} +0.8 \\ -0 \end{smallmatrix}$ )
- INITIAL INSERTION FORCE - 12 LB. (53 N) MAX  
INITIAL WITHDRAWAL FORCE - 12 LB. (53 N) MAX  
6 LB. (27 N) MIN
- INSTALLATION TOOLS:
  - UL LISTED AND CSA CERTIFIED: CT-500
  - PANDUIT APPROVED: CT-100, CT-160, CT-260, CT-400, CT-460 (DNF14-187 ONLY), CT-550, CT-1550, CT-1551.
- DIMENSIONS IN BRACKETS ARE IN MILLIMETERS OR mm<sup>2</sup>



LISTED  
20H3  
E78522



CERTIFIED  
LR31212

MAX WIRE  
INSUL DIA

A41586\_03

REV	DATE	BY	CHK	DESCRIPTION	ECN #	CUST	PM	DRAWN BY	CHK'D	SCALE	DRAWING NO.
03	2/07	DAW	DAW	ADDED DUAL TAB SIZE INFORMATION	TRO0210	LCA	TRO	<p>TINLEY PARK, ILLINOIS</p> <p>NYLON INSULATED FEMALE DISCONNECT, FUNNELED WIRE ENTRY (.206 SERIES)</p>			
02	7/03	KLFU	SKB	ADD INTERNAL SERRATIONS REMOVED SLOTS	12453	SKB	TRO				
01	1/01	RM	SKB	FILESPEC WAS N41586AA_PCD_00	08933	JAC	CCH				
00	1/96	ED		RELEASED	03871						
									EJD		NONE