

LEDiL[®]

From Light to Lighting
Upcoming products from LEDiL



www.ledil.com

Q4/2016 - Q1/2017

ver.5/2016

LEDiL's new solderless connectors

VESUVIUS & HEKLA



What makes you want it?

- Compatibility now and in the future with most of our lenses and reflectors
- Multiple dimensions and Zhaga mounting holes
- At very attractive price

Technical details

- Robust design maintaining constant pressure on COBs
- LEDiL "snap in" feature simplifies the installation and makes alignment of the LED easy
- Zhaga 35mm mounting holes and the same "twist and lock" feature as in other LEDiL holder systems
- Industrial standard integrated poke-in wire terminals and very low profile design

Make your connections more versatile, robust and future proof

VESUVIUS (D=50mm)

- Metal holding clips that ensure excellent thermal control and pressure against bigger COBs
- Compatible with various reflector families from LEDiL (ANGELETTE, ANGELA, ANGELINA)

HEKLA (D=44mm)

- Innovative LEDiL Push-In connectors allows you to decide whether you want to solder the LEDs or not
- Compatible with smaller size lenses and reflectors like LEDiL's BROOKE-G2, BARBARA-G2, MIRELLA-G2, RONDA, CARMEN and ZORYA
- Minimalistic design with great flexibility



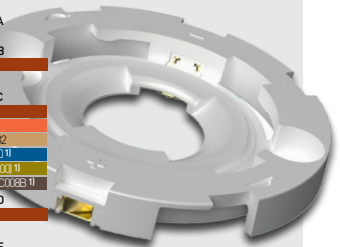
LED Compatibility

KA15411_VESUVIUS-A
V8 (Gen7)
H16
CLL03x/CLL03x/CLU720/721
ZC-12ZC-18
Sokard S13 (Gen2)
SLEGG LES15 & XD
LC016D/17D/20D
DMC 124/123

Other versions and compatible LEDs to come!

LED Compatibility

KN15490_KONNKTAKT-HEKLA-A	V6 (Gen6)/V8 (Gen6/7)
KN15500_KONNKTAKT-HEKLA-B	CXA/B1830 H12 DREE CXA/B 1816/20
KN15501_KONNKTAKT-HEKLA-C	CLT10x/CLL02x/LES10 V10 (Gen7) CLU25/27 Sokard S9 CLU700/701 IFFILE-V022 ZC-12ZC-6 CXA/B1310/1
KN15502_KONNKTAKT-HEKLA-D	SLEGG LES15 or LES11 COM-3AC00 11 LC0016D/17D/20D LC0020/1/CO088 11
KN15503_KONNKTAKT-HEKLA-E	CXA/B1500 H7 CXB1807, CXB1512
F15616_HEKLA-SOCKET-F ²⁾	V10/13 (Gen1)
VER010	



LEDiL recommends the use of M3 washers with all solderless connectors to improve reliability and LED lifetime.

1) Compatible, but not possible to use solderless connectors
2) Socket only, no Push-In connectors needed

FWHM angles, efficiencies and cd/lm values contained herein are typical values. Actual measured values depend of the specific LED/optic combination. Go to www.ledil.com for LED specific values and optical datasheets.

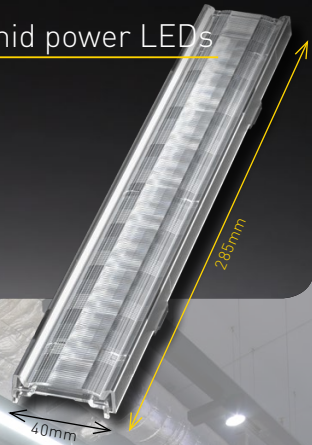
See full family listing
and ordering codes at
www.ledil.com/linnea



A new 40mm wide linear lens family for mid power LEDs

LINNEA

- Advanced optical control with less glare, great color uniformity and improved longitudinal illuminance
- Allows a solid linear construction without gaps between the lenses
- Extremely fast to assemble with integrated clips and no screws needed



FEATURES

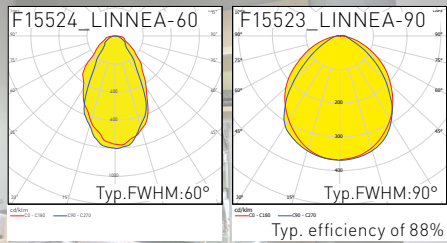
- 40mm wide PC lens with a diffused surface and a low profile
- Lens clips to a metal sheet or profile while resting on top of the PCB - different lens versions for 1-1.2mm and 0.5mm profile thicknesses
- Enough space for board-to-board connections
- 90° beam will be followed by 60° and asymmetrical beams
- Solid construction protects the LEDs from external touches and excessive dust

COMPATIBILITY

- Optimized for the most common Zhaga mid-power 24mm wide PCBs

TYPICAL APPLICATIONS

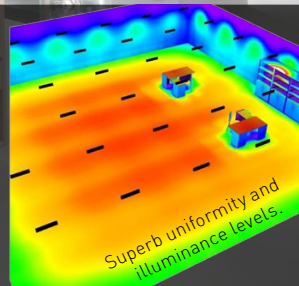
- Fluorescent lamp replacements
- Industrial lighting
- Office lighting
- Retail
- Garages and canopies
- Pendant luminaires



APPLICATION EXAMPLE

Two mid-power modules are enough to replace a typical single fluorescent tube in this warehouse installation.

Installation height: 2.9m
 36 luminaires in total
 Luminous flux: 1 000lm (LEDs)
 Luminous flux: 885lm (Luminaire)
 Eav: 115lx (workplane) 105lx (floor)
 u0: 0.55 (workplane) 0.51 (floor)
 Maintenance factor: 0.8



See full family listing
 and ordering codes at
www.ledil.com/gabriella

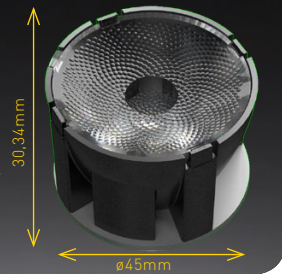


See full family listing
 and ordering codes at
www.ledil.com/florencefamily



RGB and tunable white 45mm mixer lens GABRIELLA

- 45mm color mixing lens with a very narrow beam
- Easy & reliable assembly with excellent positioning accuracy
- Medium and wide beam versions to follow



FEATURES

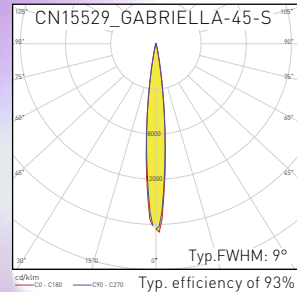
- LEDiL's unique color mixing surface ensures uniform beam
- Holder design allows more space for components
- Can be fastened with screws or pre-installed tape

COMPATIBILITY

- Optimized for 5050 sized and compatible with 7070 RGB LEDs
- 13.6mm pin distance

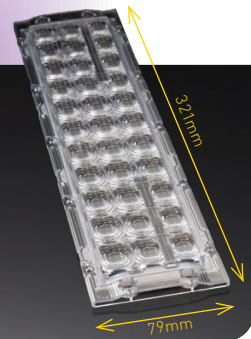
TYPICAL APPLICATIONS

- Stage lighting
- Architectural lighting



PC lens optimized for moist environments FLORENCE-3R-IP

- Up to IP67 rated PC lens for fluorescent light replacements
- Perfect for industrial halls affected by moisture and constant dust
- Compact and efficient design with high impact resistance



FEATURES

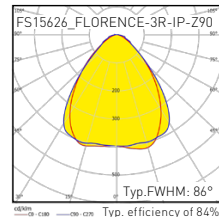
- 14 screw holes outside the integrated silicone gasket to allow up to IP67 rating
- 90° beam will be followed by 60° and oval beam

TYPICAL APPLICATIONS

- Industrial lighting
- Indoor lighting
- Low bay applications
- Halls

COMPATIBILITY

- Range of 3x11 mid-power LED modules



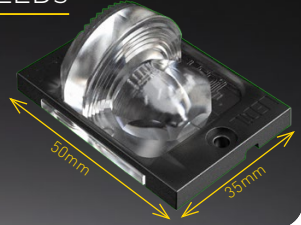
FWHM angles, efficiencies and cd/lm values contained herein are typical values. Actual measured values depend of the specific LED/ optic combination. Go to www.ledil.com for LED specific values and optical datasheets.

See full family listing
and ordering codes at
www.ledil.com/jenny



Symmetrical beams for ultra high-power LEDs

JENNY



- Silicone lenses made for extreme conditions – Superior heat and UV-radiation resistance
- Ideal for sport field lighting with ultra high-power LEDs
- FIFA lighting requirements can be met

FEATURES

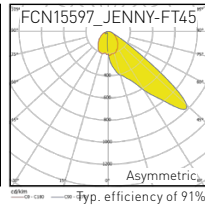
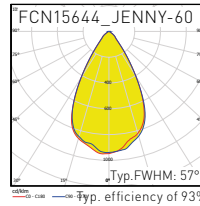
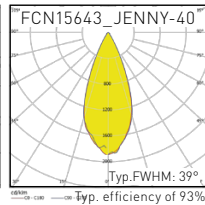
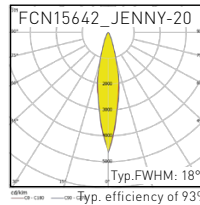
- Lens heights from only 13,4 to 15 mm
- Beam angles fulfilling NEMA requirements in typical installations
 - 20°=NEMA3
 - 40°=NEMA4
 - 60°=NEMA5
- JENNY-FT65 to follow

COMPATIBILITY

- Ideal for 4-chip ultra high power LEDs
- Comptible with previously released C14436_JENNY-HLD-A-BLK

TYPICAL APPLICATIONS

- Sport field and stadium lighting
- High mast applications

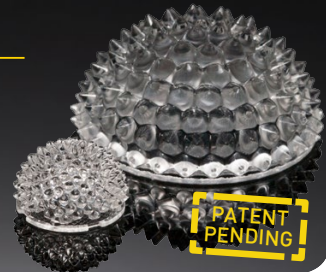




340° silicone optic for retrofits

ZORYA

- Omnidirectional lens meeting Energy Star requirements
- High temperature resistance due to silicone technology
- Twist and lock holder system allows the lens to be used with solderless connectors



FEATURES & BENEFITS

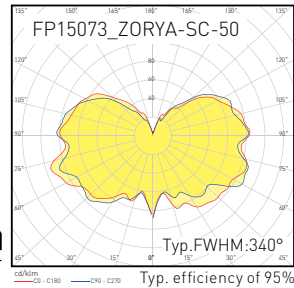
- High efficiency (95%) with excellent UV, heat, and impact resistance
- Can be used as it is, or with external protective cover
- RGB and tunable white support

COMPATIBILITY

- LES sizes from 6 mm to 24 mm
- LEDiL's HEKLA and 3rd party connectors
- LEDiL adapters allow easy fitting to various connectors and base parts

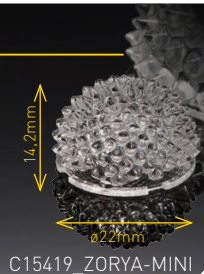
TYPICAL APPLICATIONS

- Retrofit
- Walkway lighting
- Industrial lighting
- Garden lights



ZORYA-MINI

- 22mm PC optic, perfect for light bulbs
- Close to 50/50 front and backlight ratio
- For high power LEDs up to 7070 size packages
- Simple attachment with adhesive tape



LED Compatibility	
BXRAESR, V10, V13	
CLL02x, CLL03x, CLL04x, CLU700, CLU710, CLU720, CLU730	
CXA/B 13xx, CXA/B 15xx, CXA/B 1816, CXA/B 25xx, CXA/B 30xx	
LXCoB 105/107/109, LXCoB 1204/1205, LXCoB 1211	
Soleriq P6, Soleriq P9, Soleriq S13, Soleriq S13 Gen2, Soleriq S19	
LC013B, LC019B	
ZC12/18, ZC25/40, ZC4/6	
Mega Zernigata, Mini Zernigata	
SLE 64 LES10, SLE 65 LES15	
DMC 122, DMC 125, DMC 128	

FWHM angles, efficiencies and cd/lm values contained herein are typical values. Actual measured values depend of the specific LED/ optic combination. Go to www.ledil.com for LED specific values and optical datasheets.

See full family listing
 and ordering codes at
www.ledil.com/carmen



See full family listing
 and ordering codes at
www.ledil.com/ronda



70mm COB optics with no spill light

CARMEN

- Patent pending hybrid lens family with 10° ultra narrow beam
- Higher performance compared to similar size traditional reflector designs
- Hybrid design protects the COB from external touches and excessive dust

H: 36 mm

D: 70 mm



FEATURES & BENEFITS

- No light spilling resulting in a higher intensity and less glare
- Standard retail and track lighting beams available
- Comes with a black reflector, especially optimized for low UGR applications

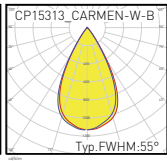
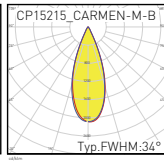
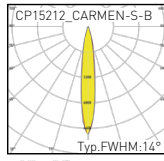
TYPICAL APPLICATIONS

- Track lighting
- Retail and supermarkets
- Industrial lighting
- Outdoor architectural
- General indoor lighting

LED Compatibility	V10, V13
CLL01x, CLL02x	CLL010
CXA/B 13xx	CXA/B 15xx
EXCoB 105/107/109	Mini Zenogate
SLE G4 LES10	

COMPATIBILITY

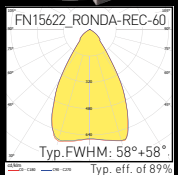
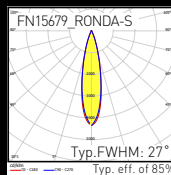
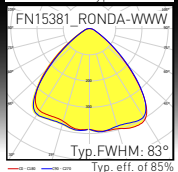
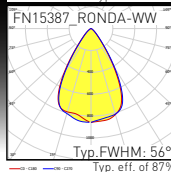
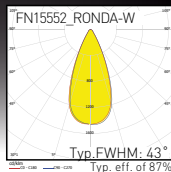
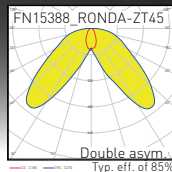
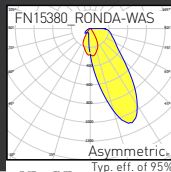
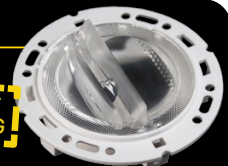
- LES sizes up to 10 mm
- LEDiL recommends spot version to be used with 6mm LES (=18000cd)
- LEDiL's HEKLA and 3rd party connectors



Versatile low-profile system for indoor lighting

RONDA

- 70mm diameter and low profile design with easy integration in luminaires
- Patent pending multi refraction optical technology allows excellent optical performance
- Various beam options makes RONDA an ideal and modern choice for wide range of downlight solutions





Dark Light Optics with no glare

FLORENTINA family



- Hybrid design of a black reflector and lenses designed for high visual comfort applications
- Multiple different form factors including single and linear
- Various mounting options and beam angles available

FEATURES & BENEFITS

- Single lens, 4x1, 2x2 and 12x1 configurations available
- Beams available from 10° to 60°, also asymmetric and double asymmetric
- Standard LEDiL faceplates in black or white and possibility to make your own faceplate
- Versions available with ±30 degrees adjustable rotation mechanism
- Mounting with steel springs or screws to ceiling or to aluminium profile with LEDiL clips

COMPATIBILITY

- LEDiL standard ROSE (up to 7070) lenses available for FLORENTINA-1, 4x1 and 2x2 versions
- LEDiL standard TINA/TINA2 (up to 3535) lenses available for FLORENTINA 12x1

LED Compatibility FLORENTINA-12x1

XHP35 HD, XM-L	LXMZ, LX Rebel ES	Duris S8
XP-E2, XP-G, XP-G2	LX Rebel Plus	Oslon Square EC
XP-L, XQ-E, XQ-E HI	LXTX, LX Z ES	Oslon SSL 80
LH351B	NC5xx19B	H35C1 LEMMA33
TL1L4	NV5xx19B/NV5xx19C	

LED Compatibility FLORENTINA-1, -2X2, -4X1

XHP35 HD	NV5xx19B/	Oslon Square EC
XP-G2, XP-L	NV5xx19C	LX MZ, LXTX

TYPICAL APPLICATIONS

- Office lighting
- Retail lighting
- Downlight applications
- Track lighting
- Indoor architectural lighting

MOUNTING OPTIONS

- Can be installed into an aluminium profile
- Screws (M3, M4 and PT)
- Press fit pins
- Springs
- Clips
- Glue

ROSE-MRK – Quality lighting for bigger LEDs

COMPATIBILITY

- Super high-power multi-crystal LEDs up to 7070 packages

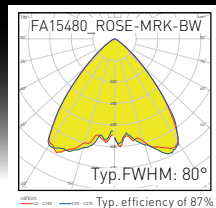
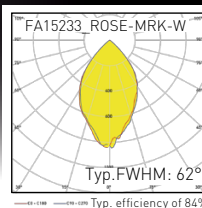
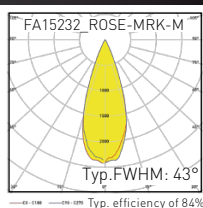
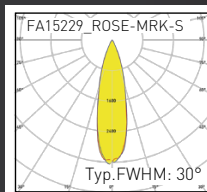
TYPICAL APPLICATIONS

- Indoor lighting
- General lighting
- Spot lights
- Up- and downlights



LED Compatibility	
MRK	X-F30
LXM	
Duris P10	

D: 21,6 mm
H: 11,8 mm

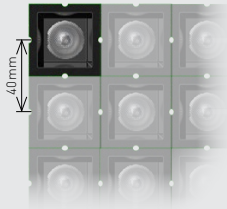


FWHM angles, efficiencies and cd/lm values contained herein are typical values. Actual measured values depend of the specific LED/optic combination. Go to www.ledil.com for LED specific values and optical datasheets.

See full family listing
and ordering codes at
www.ledil.com/florentina-family



FLORENTINA for ROSE-CMC and -MRK lenses

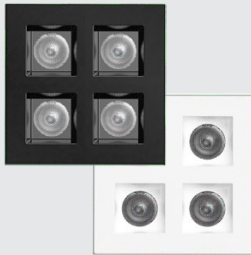


FLORENTINA-1
FLORENTINA-1-HLD
assembly including ROSE lens
C15427_FLORENTINA-1-SHD-60



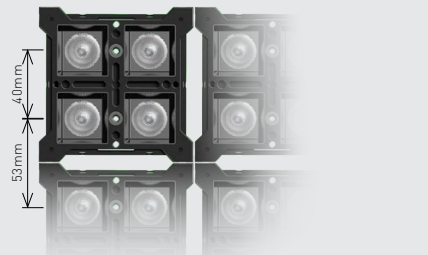
FLORENTINA-2X2

FLORENTINA-2X2-HLD assembly including 4x ROSE lens
C14734_FLORENTINA-2X2-SHD
C14960_FLORENTINA-2X2-SHD-WHT



FLORENTINA-2X2-OPEN

FLORENTINA-2X2-HLD assembly including 4 x ROSE lens
C15196_FLORENTINA-2X2-SHD-OPEN



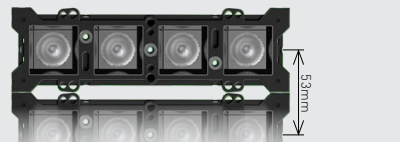
FLORENTINA-4X1

FLORENTINA-4X1-HLD assembly including 4x ROSE lens
C15028_FLORENTINA-4X1-SHD
C15690_FLORENTINA-4X1-SHD-WHT



FLORENTINA-4X1-OPEN

FLORENTINA-4X1-HLD assembly including 4 x ROSE lens
C15198_FLORENTINA-4X1-SHD-OPEN



FLORENTINA for TINA/TINA2 lenses

FLORENTINA 12x1



FLORENTINA-HLD assembly including 12 x TINA/TINA2 lens
C16446_FLORENTINA-SHD
C15469_FLORENTINA-SHD-WHT





Mid power street lighting STRADELLA family

STRADA's little sister – Compact STRADELLA lens doubles or even quadruples the density of LEDs compared to standardized STRADA-2X2 lenses, making it a cost efficient and feasible solution for mid-power LEDs.



FEATURES & BENEFITS

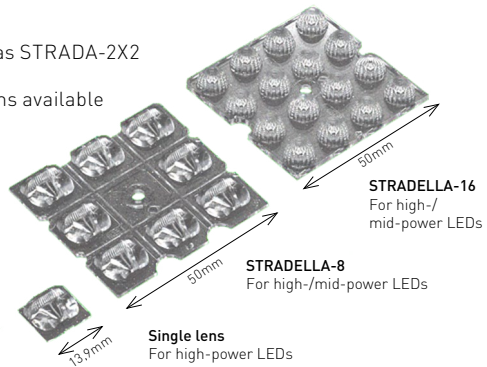
- The same dimensions and mounting hole as STRADA-2X2 family, but with 8 and 16 lenses in one
- Standard street lighting and high bay beams available
- Single lens available with the same beam angles

COMPATIBILITY

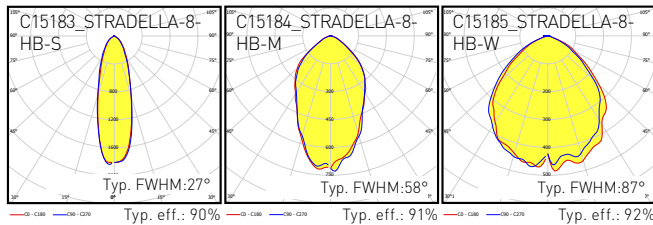
- Up to 3535 size LED packages

TYPICAL APPLICATIONS

- Street lighting (ME, T2 & T3)
- High bay lighting (30, 60, 90)
- Flood and area lighting



STRADELLA High Bay beams

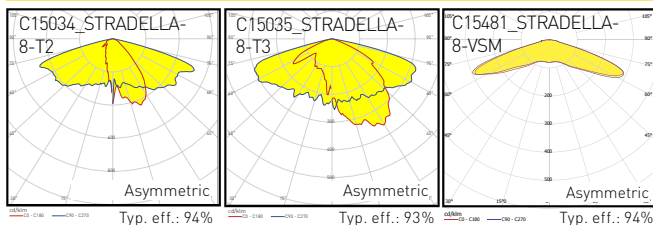


Also available:

Single lens
 C15245_STRADELLA-HB-S
 C15246_STRADELLA-HB-M
 C15247_STRADELLA-HB-W

STRADELLA 16-up:
 C15430_STRADELLA-16-HB-S
 C15431_STRADELLA-16-HB-M
 C15432_STRADELLA-16-HB-W

STRADELLA Street and area lighting beams



Also available:

Single lens
 C14502_STRADELLA-T2
 C14501_STRADELLA-T3

MORE BEAMS COMING!

FWHM angles, efficiencies and cd/lm values contained herein are typical values. Actual measured values depend of the specific LED/optic combination. Go to www.ledil.com for LED specific values and optical datasheets.

And many more!

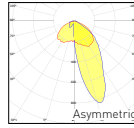
Standard LEDiL range of optics expanded



D: 286 x 61mm H: 11,4mm

FLORENCE-ZT25-S

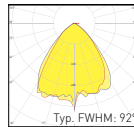
Asymmetric wall washing beam available for Florence-3R product family



D: 282 x 19mm H: 6,9mm

FLORENCE-1R-GC-Z90

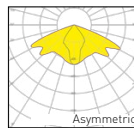
Minimum glare and optimized LED layout for high-end office lighting



D: 50mm H: 7,7mm

STRADA-2X2-CAT-B

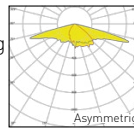
Symmetrical narrow elliptical beam, optimized for catenary lighting



D: 50mm H: 7,4mm

STRADA-2X2-T2-C

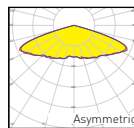
Optimized for street lighting poles with tilted and long armatures



D: 90mm H: 20,7mm

STELLA-VSM

STELLA silicone lens with Type V beam for area lighting



**YOUR
FASTLANE
TO QUALITY
LIGHTING**



2X2MX family

Super high power standard lens module family with huge possibilities for technical and street lighting



BROOKE-G2

Brooke [D:45mm] reflector family for next generation COBs. HEKLA compatible



SAGA-S-WHT

Innovative hybrid spotlight with silicone lens and white frame for durable indoor lighting

Where to buy

Joni Mäki	joni.maki@ledil.com	+358 40 413 9990	Global
Konstantinos Kyranas	konstantinos.kyranas@ledil.com	+49 17 1184 5154	Europe
Sampsa Nurmi	sampsa.nurmi@ledil.com	+358 41 503 5316	USA
Kevin Vaughn	kevin.vaughn@ledil.com	+1 (412) 721 4308	North-East USA & East-Canada
Paul Munce	paul.munce@ledil.com	+1 678 372 6053	South-East & South-Central USA
Lauri Haarala	lauri.haarala@ledil.com	+1 331 330 3215	Midwestern USA
North America	us.sales@ledil.com	+358 40 413 9990	Sales and Technical Support
Bruno Musolino	bruno.musolino@ledil.com	+55 (11) 9 8264 6688	Brazil
Jen John Lee	jen.lee@ledil.com	+55 (11) 9 7378 8874	Brazil
Rodrigo Menabrito	rodrigo.menabrito@ledil.com	+52 (81) 1609 2329	México
Raúl Parra	raul.parra@ledil.com	+358 40 095 6839	Central America, South-America
Ville Saarinen	ville.saarinen@ledil.com	+358 40 732 8705	Nordic, Baltic Japan
Simon Aldred	simon.aldred@ledil.com	+44 7540 726 384	UK, Ireland, Benelux
Glenn Bultinck	glenn.bultinck@ledil.com	+33 75 09 78 155	France
Dave Simpson	dave.simpson@ledil.com	+34 607 858 901	Spain, Portugal
Oliver Klasen	oliver.klasen@ledil.com	+49 151 20 66 1985	Germany, Austria Switzerland
Martin Lengwenus	martin.lengwenus@ledil.com	+49 1577 191 6641	Germany, Austria, Switzerland - Inside sales
Markus Bausewein	markus.bausewein@ledil.com	+49 152 34 01 3357	South of Germany, Austria, Switzerland
Marcin Wiewiórka	marcin.wiewiorka@ledil.com	+48 501 765 576	Poland, Czech Republic, Slovakia
Diego Quadrio	diego.quadrio@ledil.com	+39 340 659 9236	Italy
Nonna Raita	nonna.raita@ledil.com	+358 40 833 2707	Hungary, Croatia, Slovenia
Nico Lehtonen	nico.lehtonen@ledil.com	+358 44 525 9191	Romania, Serbia, Bulgaria, Kosovo
Saken Jusupov	saken.jusupov@ledil.com	+7 911 758 95 54	Russia, Ukraine, Belarus, Kazakhstan
Zekeriya Boz	zekeriya.boz@ledil.com	+90 546 291 2 444	Turkey
Bahador Mozaffari	bahador.mozaffari@ledil.com	+98 912 593 9355	Iran
Radheshyam Nandigam	india@ledil.com	+91 9676 333 162	India
Tang Yunfeng	yunfeng.tang@ledil.com	+86 139 1727 3224	China, Hong Kong, Taiwan, Mongolia
Howard Lee	howard@coresemi.com	+82 103 799 7351	South-Korea
Suppaluck Sae-Sean	suppaluck.sae-sean@ledil.com	+66 869 741 968	Thailand, Malaysia
Pasi Kontto	pasi.kontto@ledil.com	+358 40 776 2149	Australia, New Zealand

For detailed information visit www.ledil.com/where_to_buy



Installation guide



YouTube

For technical
support and
simulations

contact us at:

tech.support@ledil.com