

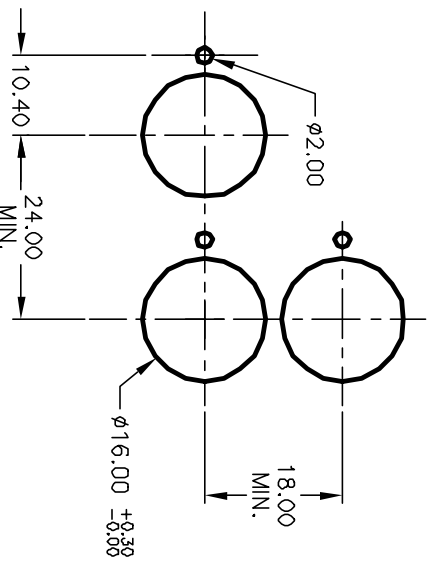
1.0 ± 0.2
3.0 ± 0.4
a-L-b (+)

CONTACT CONFIGURATION

PARTS LIST		
ITEM	QTY.	PART NO. PART DESCRIPTION
1	1	F040007 D16 OA T1 1
2	1	F050422 50-004-22 (GREEN L.E.D.)
3	1	F050215 50-002-15 (WHT lens)

NOTES:

1. ALL DIMENSIONS IN MM
2. GENERAL TOLERANCE: X.X=±0.4
X.XX=±0.25
3. RATINGS: 5A@250V AC,
8A@125V AC
4. CONTACT MATERIAL: COPPER ALLOY W/Gold Plating
5. TRAVEL: 3.0mm (Total)
6. MECHANICAL LIFE: >100,000 Cycles
7. ELECTRICAL LIFE: >50,000 Cycles
8. INSULATION RESISTANCE: >1000 MILLI-OHMS
9. OPERATING TEMP: -20°C to 55°C
10. LAMP VOLTAGE: 24VDC (L.E.D.)



RECOMMENDED PANEL MOUNTING

SCALE 1:1

E-SWITCH®

TITLE
D16 DA T11 K GRN WHT
TRANSPARENT/FLAT LENS

REV.	ECN No.	DESCRIPTION	DATE	CHKD
A	12685	RELEASE FOR PRODUCTION	1/02/03	CJB

SCALE	DATE	DR	DWG	REV
1.5:1	1/02/03	CB	XF0533P	A

THE INFORMATION CONTAINED IN THIS DOCUMENT IS PROPRIETARY TO E-SWITCH AND IS NOT TO BE COPIED OR TRANSFERRED