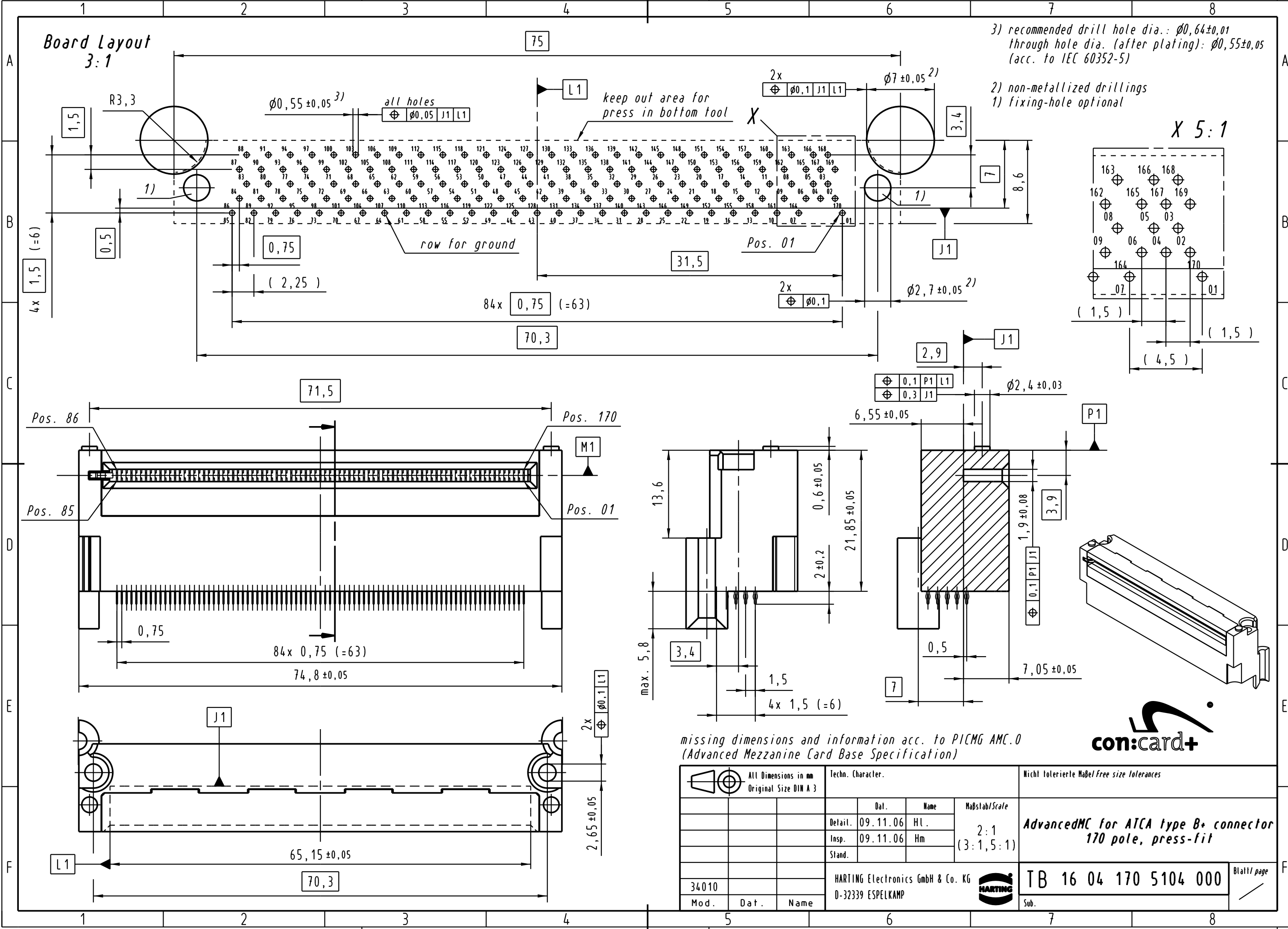


Board Layout
3:1

3) recommended drill hole dia.: $\phi 0,64 \pm 0,01$
through hole dia. (after plating): $\phi 0,55 \pm 0,05$
(acc. to IEC 60352-5)

2) non-metallized drillings
1) fixing-hole optional



Alle Rechte vorbehalten. All rights reserved

missing dimensions and information acc. to PICMG AMC.0
(Advanced Mezzanine Card Base Specification)



All Dimensions in mm Original Size DIN A 3		Techn. Character.			Nicht tolerierte Maß/Free size tolerances	
		Dat.	Name	Maßstab/Scale		AdvancedMC for ATCA type B+ connector 170 pole, press-fit
		Detail.	09.11.06 Hl.	2:1		
		Insp.	09.11.06 Hm	(3:1, 5:1)		
		Stand.				
34010		HARTING Electronics GmbH & Co. KG				TB 16 04 170 5104 000
Mod.	Dat.	Name	D-32339 ESPELKAMP			