

DETAILS

Product Number	C13485_ANNA-40-7-W
Family	Anna
Type	Lens array
Color	clear
Diameter	40 mm
Height	10,7 mm
Style	round
Optic Material	PMMA
Holder Material	
Fastening	
Status	production ready
ROHS Compliant	Yes
Date Updated	16/12/2016



OPTICAL PROPERTIES

LED	Viewing	Light	Effi-		Connector
	Angle	Beam	ciency	cd/lm	
XP-G	sim: 42	Wide	sim: 92 %	sim: 1.872	-
XT-E	33 deg	Wide	86 %	2.030	-
XB-D	sim: 35.4	Wide	sim: 89 %	sim: 2.261	-
XP-G2	36 deg	Wide	88 %	1.950	-
XP-L	sim: 41	Wide	sim: 88 %	sim: 1.470	-
C3535 (Intematix)	sim: 17	Wide	sim: 93 %	sim: 3.777	-
H35C0 (LEMWA33)	sim: 39	Wide	sim: 91 %	sim: 1.740	-
LUXEON PWT	sim: 14.7	Wide	sim: 88 %	sim: 8.565	-
LUXEON T	sim: 30	Wide	sim: 92 %	sim: 2.912	-
LUXEON TX	sim: 34	Wide	sim: 92 %	sim: 2.200	-
NCSxx19A	sim: 24.1	Wide	sim: 88 %	sim: 3.847	-
NF2x757A	sim: 19.5	Wide	sim: 92 %	sim: 4.978	-
NVSxx19B/NVSxx19C	sim: 32	Wide	sim: 92 %	sim: 2.320	-
Oslon Square EC	sim: 31.5	Wide	sim: 91 %	sim: 2.760	-
SFH 4715S	sim: 18	Wide	sim: 89 %	sim: 6.614	-
Z8Y22P	sim: 28	Wide	sim: 91 %	sim: 2.600	-
Double Dome (GM2BB)	sim: 28.9	Wide	sim: 89 %	sim: 2.717	-

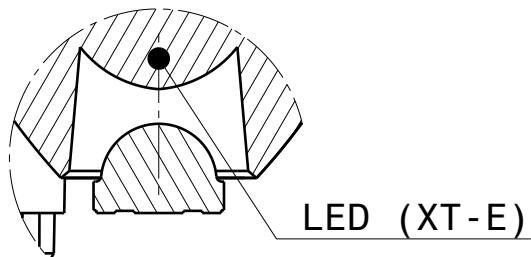
D

C

B

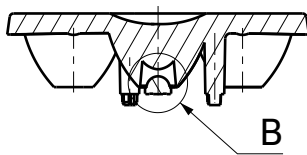
A

4

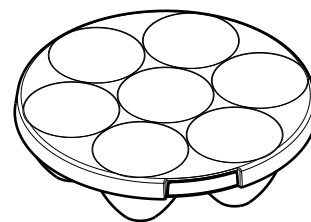


Detail B
Scale: 5:1

3

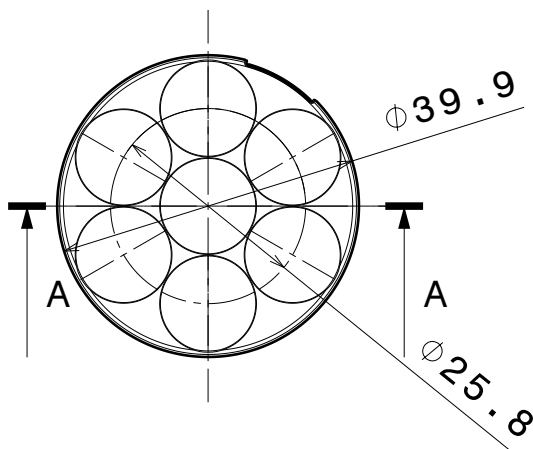
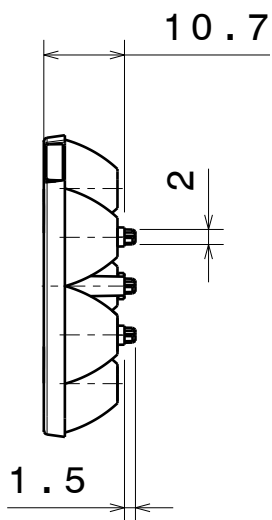


Section view A-A
Scale: 1:1



Isometric view
Scale: 1:1

2



3

2

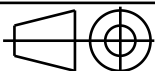
INDEX	PART NO	DESCRIPTION	MATERIAL	COLOUR
1	ANNA-40-7-series		PMMA	

Tolerances if not otherwise shown
According to DIN ISO 2768-1
Linear measures:
Up to 30mm class M, otherwise class C.
According to DIN ISO 2768-2
Form and position: class L

LEDiL

Ledil Oy
Salorankatu 10
FIN 24240 SALO
Finland

THIRD ANGLE PROJECTION:



DRAWING TITLE

ANNA-40-7-series

This drawing is the property
of LEDiL Oy. It may not be
reproduced, copied or
communicated without a written
agreement with LEDiL Oy."

SIZE PART NUMBER

A4

-

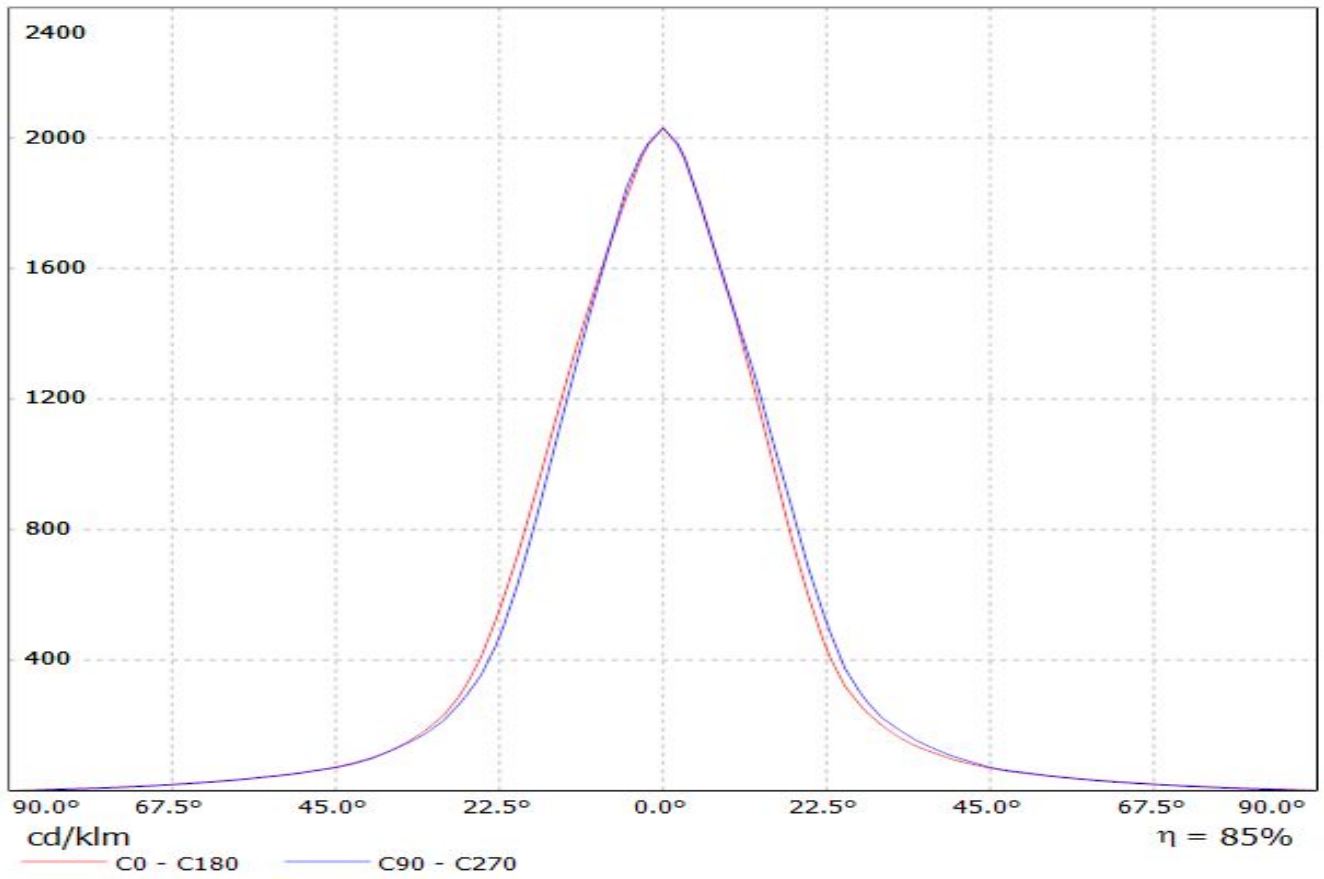
SCALE 1:1 WEIGHT 7,60 g SHEET 1/1

D

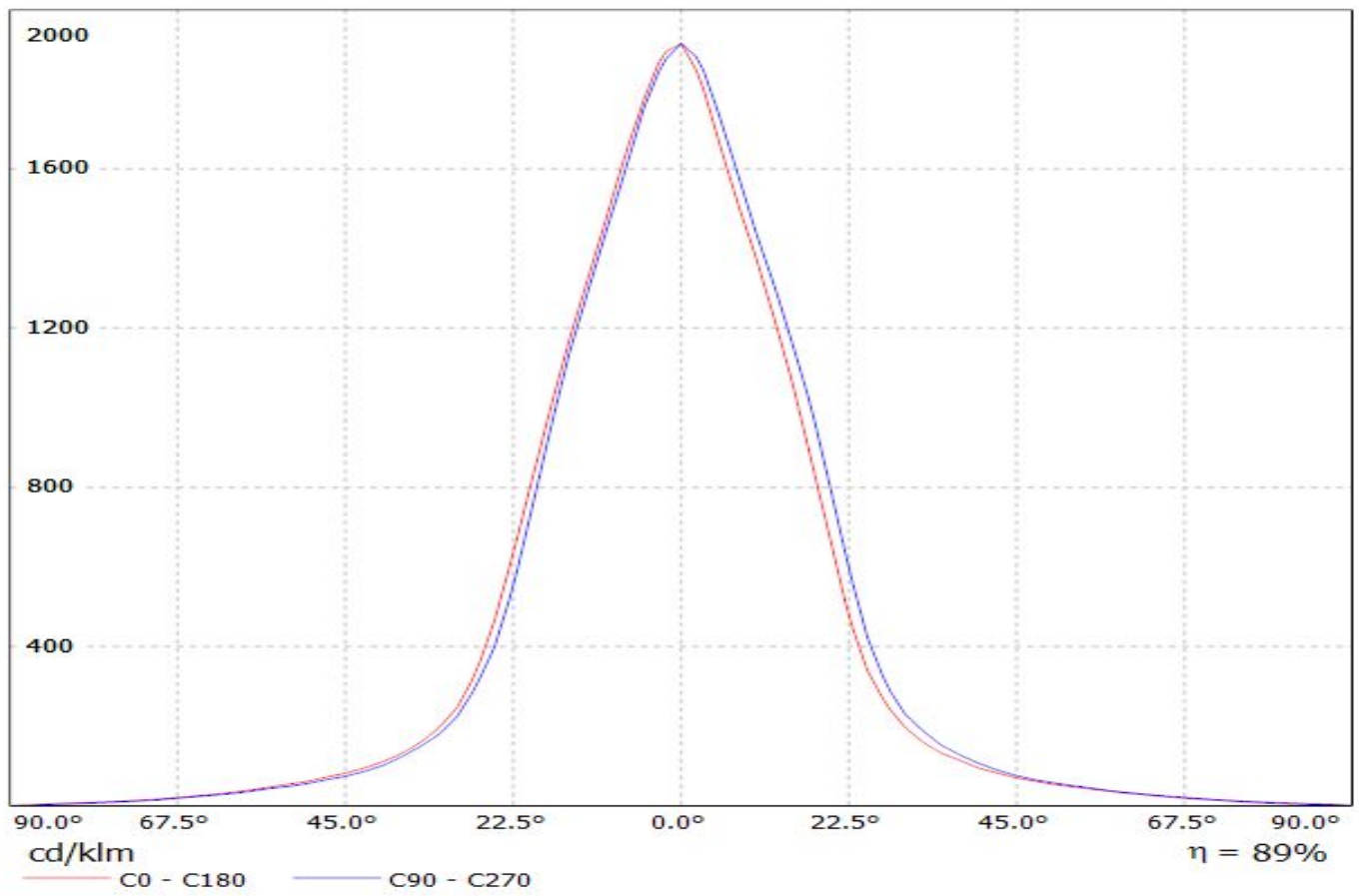
A

1

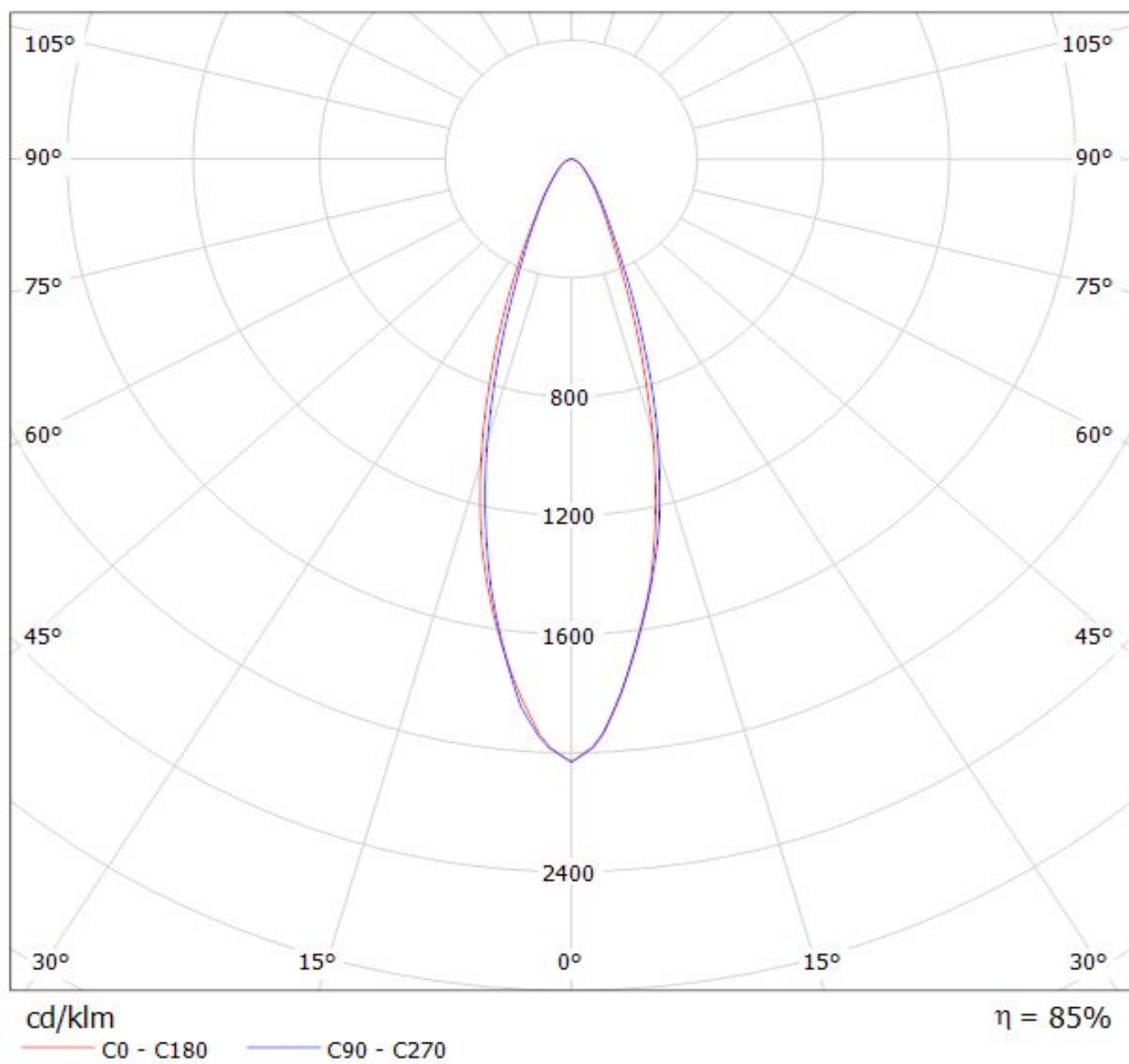
Luminaire: LEDiL C13485_ANNA-40-7-W_(XT-E)
Lamps: 1 x XT-E 724lm@250mA



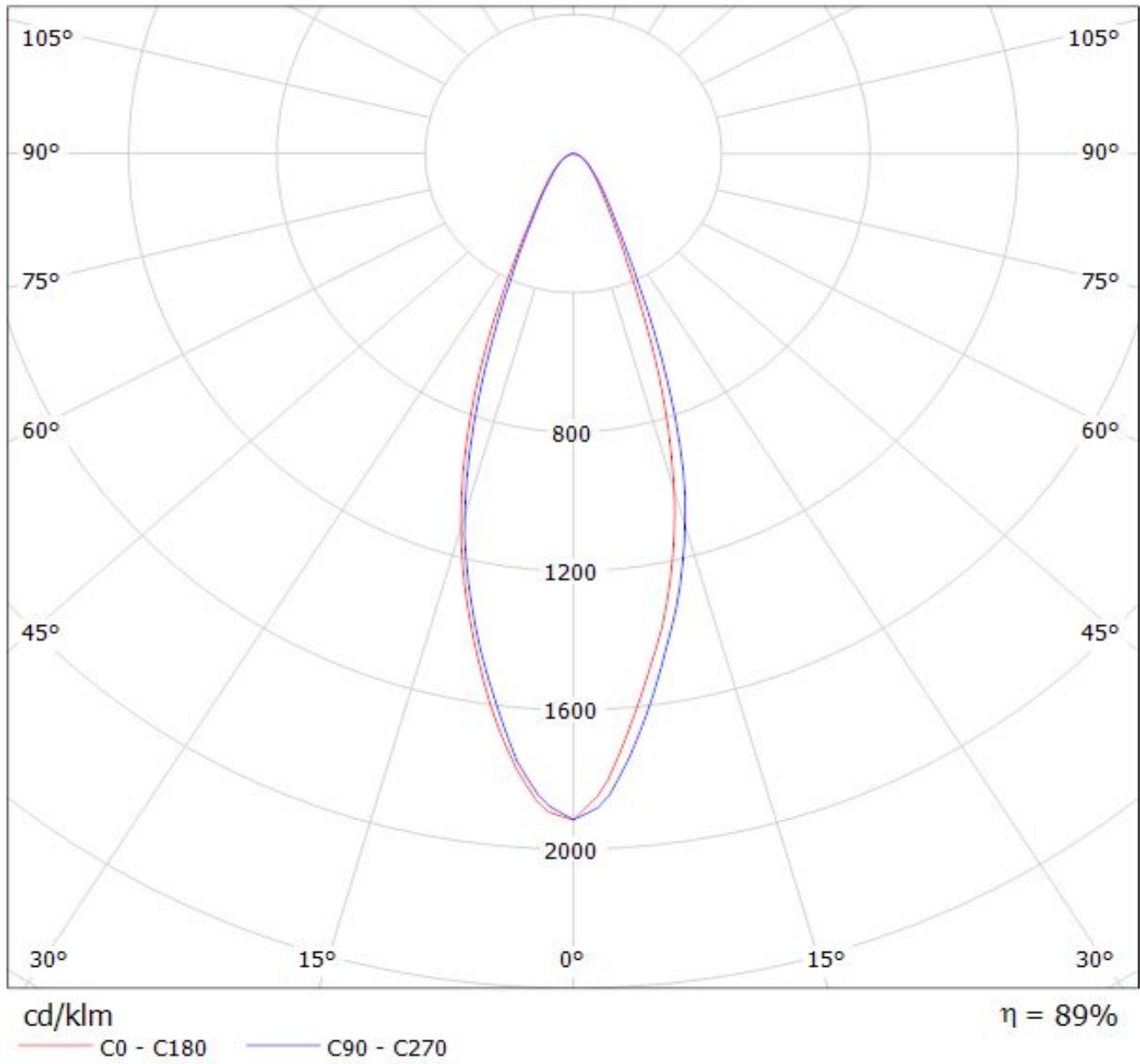
Luminaire: LEDiL C13485_ANNA-40-7-W_(XP-G2)
Lamps: 1 x CREE XP-G2 697lm@250mA



Luminaire: LEDiL C13485_ANNA-40-7-W_(XT-E)
Lamps: 1 x XT-E 724lm@250mA



Luminaire: LEDiL C13485_ANNA-40-7-W_(XP-G2)
Lamps: 1 x CREE XP-G2 697lm@250mA



NOTE: The typical divergence will be changed by different color, chip size and chip position tolerance. The typical total divergence is the full angle measured where the luminous intensity is half of the peak value.